

Putting the Love of Christ in the Heart of our Community



Signpost

Winscombe, Sandford and Churchill Parish Magazine



October 2023

Free

Who's Who in Winscombe, Sandford and Churchill Churches

Vicar St James the Great, Winscombe All Saints, Sandford St John the Baptist, Churchill	Reverend Andrew Hiscox The Vicarage, 11 Holstein Avenue, Winscombe, BS25 1EJ rev.andrew.hiscox@hotmail.com	07970 011502
Assistant Curate	Reverend Jacqui Keir-Bucknall rev.jacqui.kb@gmail.com	07990 766647
Benefice Administrator Church Office	Sue Smyth 52 Woodborough Road, Winscombe, BS25 1BA admin@winsandchurches.org.uk	01934 844650
PCC Secretary	Bill Wallace	01934 844650
Parish Safeguarding Officers	Jo Claridge (St James's & All Saints) safeguarding@winsandchurches.org.uk Pauline Hurst (St John's) stjchurchill.safeguarding@outlook.com	01934 843014 01934 852784
Churchwardens St James the Great, Winscombe	Ian Hine winswarden2@outlook.com	01934843961
All Saints, Sandford	Diana Williams sandfordchurchwarden@gmail.com Douglas Ogram douglas@ogram.com	01934 852449 01934 820972
St John the Baptist, Churchill	Tricia Avery averyfarm@cpsmail.co.uk	01934 852360
Pastoral Care Co-ordinator	Reverend Pauline Nixon revpolly@gmail.com	07511 935860
Churchill Methodist Minister Pastor	Reverend Meg Slingo Ken Young	01934 852314 01934 852686
Lynch Chapel Pastor/Minister	The Lynch, Winscombe, BS25 1AR David Jewell davidjewells@aol.com	07443 907454
Sidcot Quakers Meeting House	Oakridge Lane, Sidcot, BS25 1LT	01934 843065
Roman Catholics	Our Lady Queen of Apostles, Cheddar	01458 83593

We hope you will enjoy this copy of 'Signpost'.

Future copies will be available by email or can be downloaded from the Benefice website:
www.winsandchurches.org.uk

If you would like to receive future copies in colour, electronically, please send your email address to
parishmag2@gmail.com

A limited number of black and white printed copies are available from some local shops, each of our churches and the Church Centre (St James's Church Hall).

If you are unable to receive your copy by downloading it or by email please telephone the Church Office (01934 844650) and leave a message including your full name and address.

This magazine is one of the ways we are fulfilling our Vision

reach**ing**
wel**com**ing
ca**ri**ng 
se**rv**ing
Teach**ing**

Putting the love of Christ in the heart of our community.

Unmasking Halloween: Why Some Christians Choose Not to Celebrate



With its costumes, spooky decorations and trick-or-treating, Halloween has become widely celebrated in many parts of the world. However, for some Christians, this annual occasion holds conflicting views and while many may decide to participate joyfully, there are others that abstain from Halloween celebrations altogether. What hides beneath the many masks of Halloween that prompts some Christians not to partake in the seemingly harmless revelry but to embrace other alternatives instead?

One of the primary concerns for Christians who do not celebrate Halloween, lies in its historical origins, which can be traced back to ancient Celtic festivals, such as *Samhain*. This pagan celebration marking the end of the harvest season, involved practices incompatible with Christian beliefs, including divination, rituals to honour the dead and appease spirits. Simply look in any supermarket during October and it's easy to see that Halloween is characterised by its association with all things ghoulish and frightful, as well as even darker occult and supernatural themes. Witches, ghosts, and demons are common symbols during this time, and for Christians who hold a strong belief in the spiritual realm, engaging in activities associated with witchcraft, sorcery and consulting with spirits raises concerns, since they contradict clear biblical warnings against such practices (Deuteronomy 18:9-14).

For many Christians, faith centres around the victory of life over death through Jesus Christ. They believe that Jesus died on the cross to free us from the power of evil in our lives, and His resurrection demonstrates the ultimate and complete victory over death and demonic forces. Rather than colluding with Halloween's focus on darkness, death, and fear, which can be seen as conflicting with this core belief, they prefer to celebrate life and the blessings God has bestowed upon them. Opting instead for alternative celebrations that align more closely with their faith, some churches organise light festivals or harvest parties, providing a safe and wholesome environment for families to enjoy games, food and fellowship. These events emphasise the themes of light, gratitude and faith, giving believers an opportunity to celebrate together without compromising their faith convictions.

While Halloween continues to grow in popularity worldwide, for some Christians, its historical origins, pagan influences, glorification of fear and the macabre, not to mention perceived associations with the occult, all conflict with their religious beliefs and values. They therefore seek alternative forms of festive fun that align with their faith, emphasising love, life, and community. This year, why not leave the dark masks of Halloween behind and have a look at what's going on in your local church - you might find it more life-giving and longer-lasting than you imagined!

Reverend Jacqui Keir-Bucknall

Signpost - The Parish Magazine

This magazine is created by volunteers from the Anglican Churches in the Benefices of Winscombe and Sandford with Churchill. It aims to serve and reach out to the local village communities and in doing so provide opportunities for the residents to become more aware of activities across all Christian denominations and within our villages.

Next Month's Magazine

The deadline for the November Magazine is Sunday 15th October (one week later than usual). Please submit items as Word documents to parishmag2@gmail.com which should be no longer than 400 words. If you are including photographs please ensure that you have the permission of anyone appearing in the photograph for them to be published in this magazine. Please supply high resolution photographs as jpegs.

The Editorial Team reserve the right to amend or reformat submitted articles.

We are producing limited black and white printed copies of 'Signpost' and encourage as many people as possible to receive their full colour copy electronically.

If you would like to receive future editions of this magazine by email please send your email address to parishmag2@gmail.com

Our Website

www.winsandchurches.org.uk

Our website is the 'go to place' for information about our Churches and activities. It is regularly updated with the latest news and information.

- ❖ Home Page: latest news, monthly service plan
- ❖ Our Vision: find out about our plans for the future
- ❖ Church Life: our activities and groups
- ❖ Parish Magazine: download the latest copy and find out how to contribute
- ❖ Hire A Venue: how to hire our Church Centre, Churches and meeting rooms

How To Find Our Churches - If you need directions to:-

- St James the Great Church, Church Lane, Winscombe, BS25 1DE
- All Saints Church, Hill Road, Sandford, BS25 5NY
- St John the Baptist Church, Church Lane, Churchill, BS25 5QW
- Church Centre, 52 Woodborough Road, Winscombe, BS25 1BA

Please use your Satnav with the postcodes, or visit the website www.achurchnearyou.com

SIGNPOST - DONATIONS WELCOME

It costs approximately £600 per annum to produce the magazine, based on current prices for materials and ink. Volunteers give their time freely to compile, print and distribute the magazine.

We are always grateful to those who choose to make a donation towards the on-going costs of the magazine and those that place, paid for, advertising in it.

Donations can be placed in an envelope marked 'Signpost Donation' and posted in the letterbox at the Church Centre in Winscombe.

If you wish to place an advert please contact the Editorial Team: parishmag2@gmail.com

Many thanks to all those who have already made a donation. Thank you.

Harvest Across the Benefice

On Sunday 10th September all three of our churches celebrated Harvest with special services featuring a number of popular Harvest hymns and offering thanks for the bountiful world in which we live. Beautiful seasonal flower arrangements were also on display.



Following its Harvest Service each church held a Harvest Lunch for church members and others in the local community to join together to share food and fellowship.

At All Saints a delicious lunch of homemade soup and crumbles was served.

In Winscombe over 60 people enjoyed lunch together. The spread of cold meats with an assortment of salads was followed by fruit crumbles and cream. It was lovely to see so many people joining together for our first post pandemic Harvest Lunch. 'Just like the good old days' was the comment from many.

And St John the Baptist, in Churchill, welcomed parishioners to enjoy a sumptuous lunch to reflect and celebrate Harvest Sunday. 30 guests attended the event held and catered by the Fundraising Team.



Celebrations in September

As well as harvest there were a number of other significant celebrations in our churches in September.



Kay's 100th Birthday

On Sunday 10th September we were delighted to celebrate a milestone birthday when church member, Kay, celebrated her 100th birthday. Kay came to church at St James's accompanied by members of her family from near and far, including



from Vancouver, Canada. Kay was presented with flowers, and she brought a delicious cake to share with the congregation.

Goodbye to Chris and Margot



As part of our Family Holy Communion Service on Sunday 17th September we gave thanks for the six decades of service that Chris and Margot have given to the church and to the wider community in Winscombe. Chris and Margot will be very much missed as they make the move to Chichester to be nearer to their family.

They were presented with a card and gift together with a Memory Book, containing photos of places in Winscombe that are special to them as well as events that they have enjoyed over the years. It also included personal messages from their many friends.

Canon Shaun Darley celebrates 60 years of ordained ministry.



Shaun Darley celebrated 60 years of ordained ministry at a special service at St James's on Sunday 24th September.

After Shaun presided over communion and gave the blessing, Reverend Andrew read a letter of congratulations from Bishop Michael and a gift was given to Shaun from our churches, to mark the occasion. Shaun spoke about the special home that Winscombe has been to him and Jill since moving here some 26 years ago and praised Jill for her steadfast support for his ministry.

Afterwards the congregation were invited to share in the celebrations with a glass of fizz and a slice of a special cake decorated with a picture of St Alban's Abbey where he was ordained.



October Church Events

Prayer for Everyone: Monday 16th October 7.00 pm at The Church Centre

'Do not be anxious about anything, but in every situation, by prayer and petition, with thanksgiving, present your requests to God.' (Phil 4:6) These words are from St Paul's letter to the church in Philippi, sometimes known as the epistle of joy, as he writes to encourage the church to joyfully and hopefully present their requests to God in prayer.



When we pray, we create space for God to minister individually, locally and internationally. God calls us all to partner with him in mission, part of which is our responsibility and privilege, to pray for the people who need God's help. In the Old Testament, those who sought to follow God's will, did so through prayer and also sought his favour on their plans through prayer. In the New Testament, Jesus based his ministry on prayer, frequently retreating to private places where he could bring the needs of his people before his heavenly Father, as well as his own needs.

With the parish of Churchill recently joining that of Winscombe and Sandford, as a new Benefice, now is the time to commit our future to the Lord and to ask his blessing on our three-church community, on our villages, and on our plans to put the love of Christ at the heart of our community. It's really important to immerse our future plans in prayer, relying not on ourselves but on God for the outcome.

Come and join me and our Curate, Jacqui, on Monday 16th October at 7.00 pm at the Church Centre for an hour of prayer. We can promise that the hour will go by quickly!

Reverend Andrew
Vicar of Winscombe, Sandford & Churchill

All Souls Service of Remembrance and Thanksgiving: Sunday 29th October 4.00 pm at St James's Church



A time around All Souls' Day which offers people an opportunity to remember those they have loved but see no longer, whether the loss is recent or long ago, and to support and maintain contact with bereaved families. We hope to share a message of comfort and hope to everyone. All are welcome to join us.

Celebratory Service for Benefice of Winscombe and Sandford with Churchill: Sunday 29th October 11.00 am at St John's

We will be holding a special joint service of Holy Communion to celebrate becoming a three Church Benefice. Cheese and wine will be served afterwards.



All Saints Church Community Café



The September Cafe raised £393 including Gift Aid.
Many thanks to all those who supported us.

Our next cafe will be on
Saturday 7th October
at All Saints

We serve coffee, a variety of teas and soft drinks along with homemade
cakes, biscuits and soup.

We look forward to seeing you again.



**Save the
Children**

'Save The Children' Lunches

at

Shipham Village Hall



**Save the
Children**

Our lunches will be served on

Friday 6th and 20th October at 12.30 pm

and continue fortnightly until Friday 15th December

Join us for soup, bread, cheese, pickle and homemade biscuits,
tea or coffee

£5.00

Payments will be taken on the door and all profits go to
Save the Children charity.

For further details contact Amanda Firth on 01934 844232



 **ST JAMES'S EVENTS TEAM** 

FRIDAY 20TH OCTOBER: 7.30PM

AUTUMN SUPPER

**AT THE CHURCH CENTRE, WINSCOMBE
WITH ENTERTAINMENT FROM**

THE FAB TWINS

**MUSIC FROM THE BEATLES AND OTHER HITS FROM
THE 60S AND 70S**

TICKETS £10 EACH

**TO INCLUDE AUTUMN PLOUGHMANS &
LIVE ENTERTAINMENT. BAR**

**AVAILABLE FROM FARRONS, THE WINE SHOP,
POST OFFICE & THE CHURCH OFFICE**

**FOR MORE INFORMATION CONTACT
THE CHURCH OFFICE 01934 844650**

SAVE THE DATE!

Carols by Lantern Light

with Weston Brass

Church Centre Car Park

Woodborough Road, Winscombe

Saturday 16th December

from 4.30pm

Gates open 4.30pm

Santa arrives at 4.45pm

Singing from 5.00pm

Santa's Grotto
Refreshments
Children's Stalls



Bring a lantern or torch
Free event for all ages

Donations for the Foodbank at The For All Healthy Living Centre
and for St James's Church



Please note
new venue

Folk at Christmas

*Eleven-strong folk band BadgerSet
presents a miscellany of Christmas-themed
songs, dances, readings and tunes.*

The Church Centre

52 Woodborough Road, Winscombe BS25 1BA

Saturday 9th December at 7.30pm

Tickets £10.00 including seasonal refreshments

Available from: Winscombe Post Office, The Wine Shop and The Church Office

For further details please contact Martin Hagen on 01934 842511 or by email:

hagen.martin@gmail.com

Proceeds in aid of St James's and All Saints Church funds



Creating a Community Hub for Winscombe, Sandford and Churchill

In recent years, churches in the UK have started to engage with their communities in new ways. We share this vision to 'Put the love of Christ at the heart of our community'.

In building a new church centre we want the place to be much more than a place that is *just* for Christians. Our churches do not need or *want* to use the centre exclusively. Currently 70% of usage is for non-Church based activities.

However, we do want to go above and beyond the way our current church centre is used. We have a strong vision for a Church Centre that serves as a 'Community Hub' responding to real practical needs and helping to fill gaps in local provision.

We want to demonstrate a long-term commitment to our local community by providing a building that is available to all and here to stay.

A Community Hub would:

- be open and accessible to the local community.
- provide services that the local community wants and needs.
- provide a practical resource for people's wellbeing.
- facilitate all kinds of activities to meet people's social as well as spiritual needs.

Why do we need a new church centre to do this?

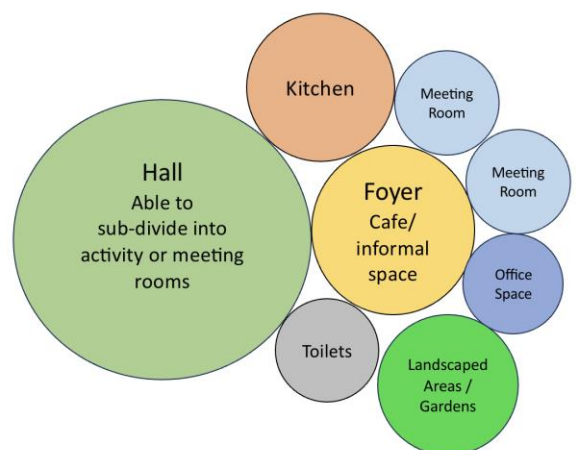
Our current church centre is not designed or equipped for this kind of community vision. It is a barrier to the work of the church and not suitable for many groups who would like to use the space. We are committed to designing a church centre that can meet a range of needs.

What will our new building include?

Our Church congregations need spaces to gather for worship, fellowship and teaching, social activities and outreach. But we rarely require exclusive use.

We envisage a building that has a large hall which can be easily divided into smaller spaces; toilets, a foyer that is a social space for people to meet together informally; small meeting or quiet rooms; a practical kitchen; and storage. A building that provides for the needs of a healthy church and a healthy community.

The space usage would look something like the bubble diagram (right). This model caters for church use on some Sundays, but also facilitates not only our own outreach work, such as the current coffee morning and 'Scramblers', but also Community Hub activities throughout the week, as well as the many classes and groups that use the current centre.



In creating this new Centre, we want to ask our local community:

‘What can we do for you?’

‘What do you need?’

and to allow the answers to significantly influence the final design.

For example, we have already consulted with Winscombe and Banwell Surgery about gaps in local provision and have had a request for support for the Carers’ Support Service to hold sessions in the centre.

Other needs identified already include support for families with children who have ASD (Autistic Spectrum Disorder); the hearing impaired; dementia care, counselling services and debt advice.

In an area where some community services are lacking and where public transport is limited, the church is looking to invest in a building that will have maximum impact in our local community.

As a not-for-profit organisation our vision is to provide low cost or free space for Community Hub activities and Church members to support their work.

Making this a reality

As well as a building a Church Centre that is suitable for the creation of a Community Hub, we want decisions about the way it is managed to be taken by people who live in our local communities in partnership with church members.

We are looking for people to help us in making our vision a reality, to find out what local people want and need and to make links with organisations and providers.

This is an exciting opportunity to make a difference to our local community.

If you are interested in being part of this team, please contact the Church Office on 01934 844650 or Alison email alisonparmj@aol.com





Refresh-men-t Breakfast

September saw 'Refresh-men-t' return and our breakfast offered the opportunity for good food and fellowship after the summer break.

October's breakfast will take place on Saturday 21st October in the Skittle Alley at The Woodborough Inn, Winscombe at 9.00 am.

All are welcome to join us, both regulars and newcomers, as we meet together in a relaxed, informal way to enjoy a quality breakfast with friends. There will be time to chat, renew acquaintances and hopefully welcome new people to our friendly group.

A choice of breakfasts will be available, but *these do need to be pre-booked*.

- Cooked breakfast: 1 x sausage, 1 x bacon, 1 x fried egg, hash brown, mushrooms, grilled tomato, baked beans, black pudding, toast and butter with tea/coffee/fruit juice - £10.00
- Vegetarian Cooked Breakfast including tea/coffee/fruit juice - £9.50
- Bacon Bap including tea/coffee/fruit juice - £7.50
- 2 rounds of toast with butter, jam, marmalade including tea/coffee/fruit juice - £5.00

To book your place for this month's breakfast contact Tim Harland on 01834 843248.



 **ST JAMES'S EVENTS TEAM** 

FRIDAY FILM CLUB

At the Church Centre

Woodborough Road, Winscombe

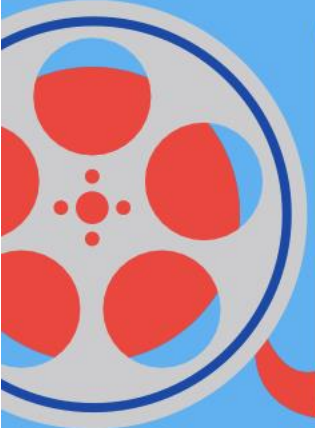
Friday 6th October

Refreshments 2.30pm

Film starts 2.45 pm

ALL WELCOME

Free Entry



This month's film is set in a remote Cornish Village. A cynical London music executive hears a singing group of ten Cornish fisherman while on a stag weekend and believes that they can achieve a top ten hit. The difficult part is convincing them he's right and getting them to sign up.

come to Scramblers

A friendly,
church toddler group for children
from birth to 4 years
and their parents/carers

Toys

Drinks &
Snacks

Stories
Both Bible &
traditional

Singing

Craft Activities

Games

Thursdays 9.30am - 11.30am
(term time only)

at The Church Centre, Winscombe

October 12th & 19th

(No Scramblers on 5th or 26th October)

November 2nd, 9th, 16th, 23rd & 30th

Contact Enid on 01934 842534 for more information



Scramblers: Can you help us?

Baby and Toddler Group

Scramblers was restarted 2 years ago after COVID.

We meet weekly in term time on Thursday mornings, from 9.30 am to 11.30 am at the Church Centre. We have grown to having around 12 parents each week, with more than 20 on the books.



We have lots of toys; Ride-on's, a slide, trains and cars, dolls and bears, a play kitchen, and lots more. We have a craft table some weeks.

We suggest a voluntary donation of £1.00 so it is accessible to all. The timing fits in with taking older children to school first.

We provide coffee and tea with biscuits. We have a slot for singing and a story, which is usually a Bible story.

We count it a privilege to welcome these parents, grandparents and carers with their delightful little children. We really enjoy being part of the young parents' network in the village. We love the atmosphere in Scramblers as it's friendly and inclusive, thanks to our adults, who are very supportive.

However, we need help!

After half term there will only be 2 leaders.



Ideally, we need a third leader; someone who can commit to coming every week, helping to set out the toys, talk to parents and put toys away. Reading the story is optional.

If this isn't you, perhaps you could help by going on a **rota to make tea and coffee** occasionally. It would be awful if we had to close because we don't have enough helpers.

Please contact the following if you can help us in any way.

We are committed to promoting a safe environment and culture. Further information about our Safeguarding Policies and Procedures can be found on our website.

THANK YOU.

Enid: Telephone 01934 842534

Tricia: email tricia.sharkey@firmvisual.com

Messy Church @The Winscombe Fair.



With temperatures in the 30s the first hour of the fair was quiet. People started to wander around the stalls, looking as hot as we were under our gazebo.

We could all do with fans! Let's make some and offer paper fan-making as a craft activity!

The Fair was positioned conveniently close to the Church Centre, so supplies of large stiff coloured A3 paper were collected, a prototype

made, and the activity was trumpeted, market-trader style, in front of our gazebo.

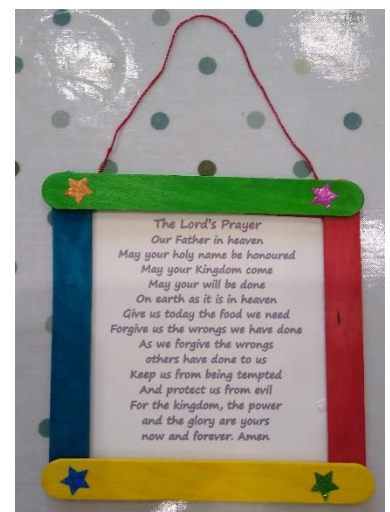


Hot-looking parents were most enthusiastic for their children to make free fans. And yes, they'd be happy to hold them while their children went on the bouncy castle (or indeed for the rest of the afternoon!).

As the children enjoyed making and decorating their fans or assembling coloured picture frames to hold the words of the Lord's Prayer, we had opportunity to explain to the parents about Messy Church and give out fliers for our Autumn programme.

The Fair had been very successful, a happy afternoon for all.

Don't forget Messy Church in the Church Centre during October and November is on SUNDAYS, usual time: 2.30 pm to 4 pm





During autumn 2023!

Switching to SUNDAYS: 2.30-4pm

@The Church Centre, Woodborough Rd, Winscombe

***October 8th 2.30-4pm**

***November 12th 2.30-4pm**

Bring Mum and/or Dad and come and join us for....

- **Crafts, Games, Songs,**
- **Bible story told through drama**
- **Drinks and Snacks**

More information?... <https://winsandchurches.org.uk/messy-church/>

Or find us on Facebook : search for Winsand Churches Messy Church

in December our special seasonal events will include:

****SATURDAY December 23rd @4pm CRIB SERVICE****



Supporting Your Local Foodbanks



Our churches support the **Cheddar Valley Foodbank** and the Foodbank based at the **For All Healthy Living Centre** in Bournville, Weston-Super-Mare.

We are pleased to be able to deliver non-perishable foods to the Foodbanks and continue to make a significant contribution.

There are collection baskets for each village in each of the churches and at the Church Centre. The foodbanks also appreciate cash donations which can be used to buy items in particular need or provide vouchers that can be spent on food in local supermarkets.

Cash donations can be placed in the postbox at the Church Centre in Winscombe. Please label to show whether your donation is for the Cheddar Foodbank or the For All Healthy Living Centre.

Items of particular need

These are some of the items that can be donated and are always gratefully received.

- | | |
|---|--|
| ❖ Soup – packet and tinned | ❖ Tinned vegetables |
| ❖ Instant mashed potato | ❖ Tinned fish |
| ❖ Cereals | ❖ UHT milk |
| ❖ Sauces – tins and jars of pasta sauce | ❖ Main meals in tins (not Fray Bentos pies please) |
| ❖ Tinned cold meat – corned beef, spam etc | ❖ Squash |
| ❖ Long life fruit juices | ❖ Paper goods – toilet roll, kitchen roll etc. |
| ❖ Desserts – tinned fruit, rice pudding, sponge | ❖ Custard – tinned or instant |
| ❖ Pasta, rice, instant noodles | ❖ Tea bags, coffee, hot chocolate |
| ❖ Sugar | ❖ Biscuits |
| ❖ Personal items – soap, toothbrushes & paste | ❖ Men's and ladies' toiletries |
| ❖ Confectionery | ❖ Snack bars and crisps |



WINSCOMBE W.I.

You are welcome to join us for our next meeting:

Wednesday 11th October

at 7.15 pm for 7.30 pm start

at the Church Centre, Winscombe

Guest speaker will be Nik Gardner: 'Educational Assistance Dogs'

refreshments will be available

(we are now on Facebook)

LYNCH CHAPEL LINK

I have been employed for a couple of months as the URC minister for Wrington, Winscombe and Nailsea. It has been amazing to return to work in these beautiful villages and towns, as we lived and worked in Wrington for over twenty years, frequently visiting Winscombe.

Winscombe Lynch Chapel continues to be well-led by the present five deacons and it is very encouraging to see the commitment of so many of the congregation to ensuring church services continue weekly, getting involved in the community and serving God. As Jesus once said in reply to being questioned on what the greatest commandments were; *“Love the Lord your God with all your heart and with all your soul and with all your mind.” This is the first and greatest commandment. And the second is like it: “Love your neighbour as yourself.”*

We have a monthly midweek service at 10.30 am on the first Wednesday in the month with refreshments offered afterwards to which everyone is welcome!



For church life, September is generally considered the beginning of a new year. Similarly, in Israel traditionally, Jews celebrate two New Years: one in the autumn, Tishri, considered to be the civil or secular year start and then in spring, Nisan, which is accepted as the start of the spiritual year. So, as the Church and the Jews live by two New Years, two



beginnings, so does each individual Christian as they have two birthdays or beginnings to celebrate the first is their natural date of birth, the second, their supernatural birth. Each day, believers are given the choice of whether to live in the old calendar or the new, in the old identity or the new. The right choice is to live every moment in the new supernatural life. As Jesus told Nicodemus,

the Jewish religious leader who had come to Him with questions: *“You must be born again.”* He continued: *“Truly, truly, I say to you, unless a person is born of water and the Spirit, they cannot enter the kingdom of God.”*

May God go with you now and forever,

Reverend David Jewell

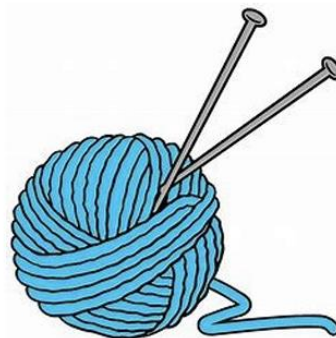




**Knit, crochet, macramé,
sew or simply natter!**

**Tea and coffee
provided.**

Knit &



Natter!

**Second and fourth
Wednesday each
month**

2pm - 4pm

at LYNCH CHAPEL

(Just over the bridge on The Lynch)

**FREE
No need to book -
just turn up!**



SEPTEMBER 13th and 27th

OCTOBER 11th and 25th

NOVEMBER 8th and 22nd

DECEMBER 13th

Churchill Baby & Toddler Group

Mondays 09.00-11.30 Term time
@Churchill Methodist BS25 5NG

2, 9, 16 & 30 October

Try us for FREE!



INFO: Jacqueline
01934 844134

- Friendly group
- Lots of toys
- Yummy snacks
- Cuppa, cake & chat

Churchill **Methodist** Church
churchillmethodistchurch.org.uk

October Quiz

Our quiz this month features that much loved Autumnal fruit the pumpkin which has become increasingly popular to grow in the UK in recent years.



1. Which continent do pumpkins originate from?

2. In which fairy tale is a pumpkin transformed into a carriage?

3. The word pumpkin comes from the Greek word 'pepon'. What does pepon mean?

4. In Harry Potter and the Philosopher's Stone, in which Hogwarts room can floating pumpkins be seen for Hallowe'en?

5. In 1896 which Olympic sport were pumpkins used as lane markers?

6. Which family of fruit do pumpkins belong to?

7. Who is the pumpkin king in the Tim Burton film 'The Nightmare Before Christmas'?

8. In which country is the Windsor Pumpkin Regatta held annually?

9. What traditional dessert is made to celebrate Thanksgiving in the USA?

10. According to the nursery rhyme what was the name of the pumpkin eater 'who had a wife but couldn't keep her'?



Answers on page 45

Winscombe Luncheon Club

***Are you over 60 and living on your own?
Would you like to have lunch cooked for you and
enjoy the company of others?***



The Winscombe Luncheon Club was started over 40 years ago when the need was recognised for people living on their own to enjoy a hot meal and fellowship.

Three teams of volunteers cook a fresh meal on the first three Wednesdays of each month at Winscombe Community Centre.

The meal is served at 12.30 pm and a typical menu is:

**Roast Lamb
Roast Potatoes
Cabbage, carrots and cauliflower**

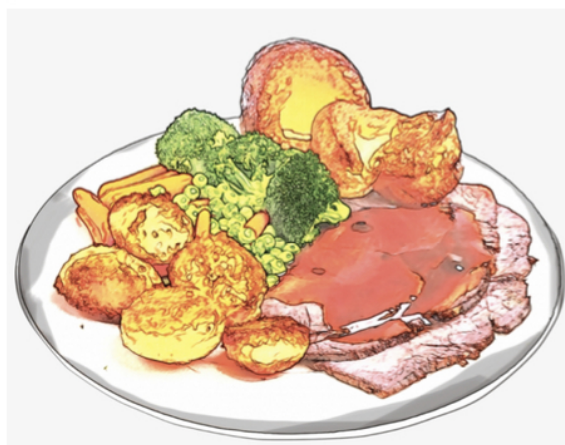
Dessert

Tea or Coffee

All for £5 a head.

We need more people to join us and enjoy what the Luncheon Club has to offer, so that the club continues to be viable.

If you are interested, please contact Mo on 01934 843729 for further details.





Thursday Lunches



AT 12.30 PM

@CHURCHILL METHODIST HALL

HARVEST LUNCH 5 OCTOBER

**Join us for Sausage & Mash,
Peas & Tomatoes
Hot or Cold Dessert
Tea or Coffee**

**only
£5**

SOUP LUNCH 12, 19 & 26 OCTOBER

**Come enjoy Soup & Roll
Hot or Cold Dessert
Tea or Coffee**



For bookings & transport:
**01934 832606 Queenie
or 852197 Janet**

Churchill Methodist Church

WWW.CHURCHILLMETHODIST.ORG.UK

Winscombe Community Singers at Winscombe Village Show

Winscombe Community Singers always enjoy performing for an audience and the Winscombe Village Show is one of our favourites. It's a great opportunity for us to entertain people from the village and local area, this time in the exceptionally hot early September weather!



Accompanied by our Musical Director, Josh Newport, we sang an eclectic mix of music from the big band swing of 'Tuxedo Junction' to songs with a gospel vibe, a couple of pieces from musical theatre and Karl Jenkins's 'Adiemus'. The set also included the choir's very own song written by our previous musical director; 'Together in Harmony' uses ideas from choir members about what singing means to them. And it was our very first public performance of the barbershop style piece 'If I Could Write A Song' composed by one of our own choir members, Colin.

If you were there and wondered why the accompaniment suddenly stopped in the middle of one piece here is the answer. The heat was so extreme that it caused the tablet with all the music to shut down! The piece we were singing was 'Dare' - quite appropriate as it is all about being courageous which is just what we had to be to continue to the end acapella style!



Why not join us?

We meet every Tuesday

Winscombe Community
Centre

7.30 pm to 9.00 pm

<https://www.winscombecommunitysingers.co.uk>

Winscombe Folk Club supporting Winscombe Village Show 2023

Phew! 'What a scorcher' was never truer. With hardly a breath of wind and scorching sun, this year's Winscombe Village Show was a wonderful event and from the perspective of Winscombe Folk Club it was lovely to support a major village event for the first time.

Our local band Ochre Trails was first on stage and played a beautiful set of songs and tunes. We worked the stage with local DJ TAV who was master of ceremonies making all the right PA announcements at all the right times and repeatedly reminding folks to keep hydrated (of course the bar was right next to our stage) and use plenty of sunscreen.

The Old Fox Band has been going for years and morphing from one decade to another with a variety of members, but always led by the indomitable Pete Thompson from Magenta. Pete has been a stalwart of Winscombe Folk Club since its inception and produced a lovely set of tunes from varying traditions and places.

Oli (AKA Nigel Carson) did a short set at the end of the day to wind up proceedings, but since all the beer had been sold, there wasn't much point in carrying on into the evening!

WFC would like to thank the organising committee for an excellent day (including booking record breaking September weather), and look forward to helping in future events – maybe not quite so hot next year?

Nigel Carson



Folk .. Yes, but all kinds of music and verse.

Fourth Tuesday each month 7.30 to 10.30 £2

Upstairs Bar, Winscombe Club, 7 Sandford Road.

A quiet and respectful acoustic space for performers and audience.

Further information from Nigel Carson, 07551 197685 or winscombefolkclub@gmail.com. Also on Facebook.



Si Barron



In Concert

WFC supporting RNLI

Sat 14th October 2023

Church Centre

52 Woodborough Road, Winscombe, BS25 1BA

An exquisite raconteur, witty, original and a fine interpreter of traditional and contemporary folk songs.

Si plays and sings with great integrity. His guitar arrangements are a sparkling accompaniment to his crystal clear voice.

Supported by members of WFC

**CASH
on door
please**

This will be a special evening

Doors open 7.30 for an 8pm start

Tickets £8 reserve by email

winscombefolkclub@gmail.com

**Cash
BAR**

OCTOBER 2023 – DIARY

SUN 1	TRINITY 17 See opposite page for details of Services
TUES 3	10.00am Midweek Communion – All Saints Church Room 10.30am Coffee Morning – Church Centre
WED 4	7.15pm Choir Practice – St James’s
THURS 5	9.30am Scramblers – Church Centre 10.00am Communion in the Community – Dunster Court 7.30pm Bell Ringing – St James’s
FRI 6	2.30pm Film Club – Church Centre 6.30pm Quiz Night in aid of Christian Aid – Church Centre
SAT 7	2.30-4.00pm Come for a Cuppa – Lynch Chapel
SUN 8	TRINITY 18 See opposite page for details of Services
TUES 10	2.30-4.00pm Messy Church – Church Centre 10.00am Midweek Communion – All Saints Church Room 10.30am Coffee Morning – Church Centre
WED 11	2.00pm Knit and Natter – Lynch Chapel 7.15pm Choir Practice – St James’s
THUR 12	9.30am Scramblers – Church Centre 7.30pm Bell Ringing – St James’s
SAT 14	9.00am Winscombe Saturday Market – Community Centre 7.30pm Winscombe Folk Club Concert - Church Centre
SUN 15	TRINITY 19 See opposite page for details of Services
MON 16	7.00pm Prayer Evening - Church Centre
TUES 17	10.00am Midweek Communion – All Saints Church Room 10.30am Coffee Morning – Church Centre
WED 18	2.45pm Communion in the Community – Sewell House 7.30pm Choir Practice – St James’s
THUR 19	9.30am Scramblers – Church Centre 7.30pm Bell Ringing – St James’s
FRI 20	7.30pm Autumn Supper with Fab Twins – Church Centre
SAT 21	9.00am Refreshment - Men’s Breakfast - Woodborough Inn
SUN 22	TRINITY 20 See opposite page for details of Services
TUES 24	10.00am Midweek Communion – All Saints Church Room 10.30am Coffee Morning – Church Centre
WED 25	2.00pm Knit and Natter – Lynch Chapel 7.15pm Choir Practice – St James’s Church
THUR 26	7.30pm Bell Ringing – St James’s
SUN 29	BIBLE SUNDAY See opposite page for details of Services
TUES 31	10.00am Midweek Communion – All Saints Church Room 10.30am Coffee Morning – Church Centre

BIBLE READINGS FOR OCTOBER

Sunday 1st October Ezekiel 18:1-4,25-32 Psalm 25:1-8 Philippians 2:1-13 Matthew 21:23-32	Sunday 8th October Isaiah 5:1-7 Psalm 80:9-17 Philippians 3:4b-14 Matthew 21:33-end	Sunday 15th October Isaiah 25:1-9 Psalm 23 Philippians 4:1-9 Matthew 22:1-14
Sunday 22nd October Isaiah 45:1-7 Psalm 96:1-9 [10-13] 1 Thessalonians 1:1-10 Matthew 22:15-22	Sunday 29th October Nehemiah 8:1-4a [5-6], 8-12 Psalm 119:9-16 Colossians 3:12-17 Matthew 24:30-35	

Church Service Times Opportunities to Worship in October

Sunday 1 st October	8.00 am 10.00 am	St John's Church Centre	BCP Holy Communion Café Church
Sunday 8 th October	9.30 am 11.00 am 11.00 am	St James's All Saints St John's	Holy Communion Parish Praise Holy Communion
Sunday 15 th October	10.00 am 11.00 am	Church Centre All Saints	Family Holy Communion Holy Communion
Sunday 22 nd October	9.30 am 11.00 am 11.00 am	St James's All Saints St John's	Holy Communion Parish Praise Holy Communion
Sunday 29 th October	10.00 am	St John's	Benefice Holy Communion

Midweek Services

Every Tuesday All Saints 10.00 am Holy Communion

Communion in the Community

Sunday 1st October Sandford Station 11.00 am
Thursday 5th October Dunster Court 10.00 am
Wednesday 18th October Sewell House 2.45 pm
Thursday 26th October Winscombe Hall 10.30 am

Special Services October

Sunday 29th October St John's 10.00 am Benefice Holy Communion to
Celebrate St John's joining the Benefice

Sunday 29th October St James's 4.00 pm All Souls Service of Remembrance
and Thanksgiving

We Remember

Our love and sympathy go to the family and friends of:
Sheila Fling whose funeral service took place at Weston Crematorium on Thursday 7th September 2023.

Safeguarding

Our churches are committed to promoting a safe environment and culture. The safeguarding of children, young people and vulnerable adults is a priority. Further information about our Safeguarding Policies and Procedures can be found on our website <https://winsandchurches.org.uk/safeguarding/>. Details of how to contact one of our Parish Safeguarding Officers can be found on page 2 of this magazine.

A Famous Birthday in October

Sir George Williams

I wonder how many of you have heard of this Somerset born social reformer who, luckily for the 'Village People' founded the Young Men's Christian Association (YMCA) in 1844?

George was the seventh of eight children born to a farming family from Dulverton on Exmoor.

Moving to London in 1842 to pursue a career in drapery, he found work making gentlemen's clothes in St Paul's Yard, by St Paul's Cathedral, in the City of London. A man of faith, he also regularly attended a chapel near his workplace.



George was troubled by the things that were deemed as 'unhealthy' for young men to engage with and decided to do something about this. He gathered some of his likeminded friends around him and began to put together a number of activities, including Bible Study and prayer. These enabled the young people in his area to escape from the hazards of life on London's streets and begin to build better lives for themselves. The first meeting of this Young Men's Christian Association took place in the shop in which he worked and there is a plaque commemorating this spot in London today.

Soon YMCA grew. It spread out of London a year later, with branches in Manchester and Leeds, and to the USA and Canada in 1851 following links made at The Great Exhibition. In 1855, it became truly global as the first YMCA World Conference was organised that produced the 'Paris Basis' – an international agreement about the aims of YMCA.

Did you know that the American YMCA invented both basketball and volleyball?

George became Sir George on the 50th anniversary of the founding of YMCA when he was knighted by Queen Victoria. He died in 1905 at the age of 83 and was laid to rest in the crypt of St. Paul's Cathedral. By this time, there were 45 YMCAs running all over the world with an incredible membership of more than 700,000 people.



The YMCA supported troops in both World Wars and afterwards supported ex-servicemen, displaced people, refugees and prisoners of war. Its first purpose-built hostels were opened in Cardiff and London in 1912 and has continued to respond throughout the years with initiatives to meet the needs of vulnerable young people.

Today, YMCA has grown to serve more than 65 million people in 120 countries regardless of age, race, gender, sexual orientation or socio-economic background.

YMCAs all over the globe celebrate Founder's Day on 6th June every year as they remember the man who, at the tender age of just 22, created the largest youth charity in the world.



ADVENTURES IN TIME AND SPACE

60 Years of Doctor Who Art Exhibition

Weston Museum, Burlington Street,
Weston-super-Mare, BS23 1PR

21st October 2023 to 27th January 2024

Allons-y, time travellers and art aficionados! Weston Museum is all set to take you on a nostalgia-filled ride with "***Adventures in Time and Space – 60 Years of Doctor Who Art.***" Celebrating the show's six decades, this exhibition promises to be a treat for all those who've shared an adventure with the Doctor.

This is the largest collection of original and digital art from, and about the programme ever shown in one location!

Hold onto your sonic screwdriver as you journey back to the roots of the longest-running Sci-Fi extravaganza known to humanity. From the classic era that graced our TV screens from 1963 to 1989, to the modern reboot that's been stealing our hearts since 2005, this exhibition is a heartwarming journey for Whovians of all generations.

Expect to be greeted by the images of familiar faces of the Doctors we've cherished through the years – from the stern charm of William Hartnell to the iconic scarf-swirling of Tom Baker, the cheeky charm of David Tennant, the ground-breaking brilliance of Jodie Whittaker, and the excitement of the new Ncuti Gatwa. And of course, it wouldn't be a Doctor Who affair without our favourite villains – the Daleks, Cybermen, and a host of creatures that have given the Doctor a run for their money across time and space.

The exhibition promises to be a '*tardis*' of artistic archives, rounding up an exceptional collection from private art collectors and dedicated fans who've lovingly held onto these visual treasures. On display will be iconic book covers, VHS video covers, annuals, comics and graphic novels that have kept us hooked. To add a sprinkle of that quintessential Doctor Who magic, there's even a painting that made its debut on the show itself.

For further information visit www.westonmuseum.org or call 01934 621028

The Doctor Who Scarf Project

21st October 2023 to 27th January 2024

Weston Museum is so excited about their new exhibition '*Adventures in Time and Space – 60 Years of Doctor Who Art*', that they just want to wrap themselves in yet more Doctor Who fun, so have decided to get knitting and they want you to join in! Their aim is to make Weston-super-Mare a sea of colourful Doctor Who loveliness by knitting the longest community made, Dr Who scarf ever!



Grab one of our knitting starter packs from the museum shop (throughout the exhibition dates) and get knitting your own scarf. There is a free knitting starter day in the October Half Term, where a team of helpers are on-hand to get you started – no need to book.

Ever wondered why the 4th Doctor (Tom Baker) had such a long-striped scarf? The story goes that the costume designer gave a knitter a big bag of wool and asked her to knit a scarf. He thought she would choose what she liked from the bag, but instead she used up the whole lot and an iconic piece of Doctor Who fashion was created! After some fun has been had wrapping various things in the awesome scarf, the is to cut it into standard lengths and given to the 'Warm Bundles Project' for the homeless.



If you have any spare wool or knitting needles at home and would like to donate them to the project, please email: Katherine Bell (Learning and Events Officer) katherine.bell@wsm-tc.gov.uk

For further information or to arrange dropping off some wool or needles, email: museum@wsm-tc.gov.uk

Churchill Methodist Church
CREATE! Sunday

Sunday 15 October

4-6pm @Dolebury Warren

Fairy Houses & Funky Fungi

Fun for Families

Fungus Guide

Art & Activities

Storytime

Picnic Tea



**INFO: Jacqueline
01934 844134**

Churchill Methodist Church
churchillmethodistchurch.org.uk



TASTE AND SEE WORSHIP FOR ALL AGES

What will you find? Soul food. Hope.
Space to reflect. Help. Comfort.

Sundays 11-11.45 am @Churchill Methodist

1 October 5 November 3 December

12 November - Remembrance Sunday

Free children's activities. Warm welcome awaits you.
Details: Jacqueline **01934 844134**

Churchill **Methodist** Church 



A sneak preview at What's On at Churchill Music this coming year...

Saturday 7 th October 2023	7.30pm	St John's Church, Churchill. BS25 5QW	Sveta & Slava cello and piano duo.	Tickets: Champions: £15.50 Non-Champions: £19.50 U 18s: £1.00
Saturday 2 nd December 2023	7.30pm	St John's Church, Churchill. BS25 5QW	Jessica Duchen, author with Viv McLean, piano.	Tickets: Champions: £15.50 Non-Champions: £19.50 U 18s: £1.00
Monday 29 th January 2024	6.00pm	St John's Church, Churchill. BS25 5QW	Churchill Music Young Musician of the Year 2024	Tickets: £9.00 U18s: Free. Seats are unreserved.
Saturday 2 nd March 2024	7.30pm	All Saints Church, Wrighton BS40 5LG	Atéa Quintet: Alena Walentin, Anna Hahimoto, Ashley Myall, Chris Beagles, Philip Haworth.	Tickets: Champions : £15.50 Non- Champions : £19.50 U 18s: £1.00
Saturday 27 th April 2024	7.30pm	All Saints Church, Wrighton BS40 5LG	Karolos: Harriet Mackenzie, Sarah Jane Bradley, Graham Walker with Craig Ogden, guitar.	Tickets: Champions: £15.50 Non-Champions: £19.50 U 18s: £1.00
Saturday 6 th July 2024	12.30pm	Bramble Cottage Dinghurst Road Churchill BS25 5PJ	Jazz in the garden with Opa Rosa Family lunchtime event.	Tickets inc hog roast etc: Champions : £19.50 Non-Champions : £22.50 U 18s: £7.50

Tickets are normally available a month or two in advance but why not go the whole hog & become a champion & buy a season ticket?

View details on <https://www.churchillmusic.org.uk/>

Tickets: <https://www.ticketsource.co.uk/>, holly@churchillmusic.org.uk;
Holly Greenwood-Rogers 07442 672805

SVETA & SLAVA

CELLO AND PIANO DUO



7th October 7.30 pm

St. John's Church, Churchill



Tickets: £15.50, £19.50, U18's £1.00
To book: Scan QR code or
Holly at 07442 672805 or
email holly@churchillmusic.org.uk or
'Pot luck' at the door

Supporting and Protecting Our Natural World.

Teasels

Everything about the teasel is spiky - stems, leaves, sepals and even the flower! Yet, bees, butterflies and birds especially goldfinches love them. Once teasels arrive in your garden, I am sure that you will want to welcome them though they do tend to self-seed just about anywhere wherever they feel happy.

Teasels are tall (up to 2 metres) but usually do not need staking. They are elegant and spectacular biennials. In year one, compact prickly rosettes of leaves are produced. Now is the time to remove unwanted plants. In the second year it will be time for flowers.



I find myself waiting for the wonderful cone shaped flowers They produce bands of purpley/bluish flowers that begin in the centre of the flower head and then spread up and down from there.

This is when bees and butterflies start to arrive though how they manage to push aside the spikes I cannot think.

As the flowers fade to brown they remain on the teasel all winter long. Time for the next treat as goldfinches arrive to extract the many, many seeds. Again, how such small creatures manage to

penetrate the spikes right into the seed head I cannot explain. In fact, in my garden, they select the teasels rather than the purpose-built feeders filled with niger seed especially for them!



The teasel has other attributes. On a cold frosty or snowy day their outline will be beautifully etched in frost. They also make excellent decorations with other seasonal plants at Christmas time especially if sprayed with gold or silver paint for example.



In spring it will be time to cut back the teasels and put them on a brush pile maybe because a new generation is ready to grow. Easy gardening with huge pleasure added!

The leaves are unusual for they are cupped around the stem so that water collects in the resultant hollow. I have certainly seen birds drinking water from the little reservoir. Insects drop into the water and often drown. It is apparently possible that teasels use the dead mush as food.

Did You Know? In the past it was found that by fluffing up wool, tiny air pockets in the fibre were created which prevented heat from escaping so quickly. The teasel was used to raise the ends of the fibre on the wool cloth to create air pockets. Teasing (carding) made the wool seem fuller, hence the name teasel. Some weavers still use this process, and more are likely to. It works!

**The Friends of St James's the Great Church,
Winscombe**

Two Legs, Two Wheels and a Well



Gary Hale will tell us about his grueling fundraising trip climbing Mount Kilimanjaro, immediately followed by a 440km bike ride across Tanzania and a story about providing clean water to rural communities in Uganda.

Thursday 23rd November 2023

The Church Centre, 52 Woodborough Road,
Winscombe BS25 1BA

7pm for 7.30pm lecture

Tickets £10, including a glass of wine or soft drink

Tickets Available from:

Hampden Osteopathic Clinic Tel 01934 843617

Or Pay On the door

Apple Trees Help Spread Community Spirit

Did you know that Thatchers run a Community Orchard Project?

This year they had 600 entries from across the country and a panel had the difficult job of deciding which groups would receive the bundles of trees.



In our local area trees were donated to a number of groups including Weston Hospicecare and The Strawberry Line Association and to several schools.

The trees are donated to organisations who really care about their communities and Thatchers are looking to spread the love of apple trees across the UK.

This was the third year of the project and brings the total number of organisations supported since the launch to 175 with almost 1000 apple trees donated and planted across the country.

Groups can register their interest for the 2024 project on the Thatchers website.

Wildlife in Abundance in the Conservation Area at Thatchers

The conservation area, that runs alongside the Strawberry Line cycle and footpath alongside the mill in Sandford, has been specially created by Thatchers with advice from Avon Wildlife Trust. Around an acre in size, and planted at the start of 2022, it's already making a real contribution to the local environment and the biodiversity of the area.

Two areas of coppice woodland border a central grassland plateau where native species such as hawthorn and hazel, English oak and field maple, together with grasses and nectar-rich wildflowers are already feeling at home. This planting helps create sheltered micro-habitats and aids the important retention of a dark corridor for bats and other wildlife.

The 500 acres of Somerset apple orchards, already provide a home to a diverse habitat. Myrtle Farm has recorded 13 species of bat, as well as birds which are on the BOCC (Birds of Conservation Concern) Red and Amber lists, including house sparrow and redwing, grey wagtail and mistle thrush.

It is hoped that the new conservation area will gradually become a familiar home to many of these species, with the trees and plants selected especially to create a protected and foraging rich haven.



Churchill and Langford Ladies Lunch Club

We meet on the first Tuesday of each month
at The Churchill Inn, Churchill at 12.30 pm for 1.00 pm
£15 per head for a 2 course lunch with coffee.

Pre-booking is essential.

Contact Margaret Avery on 07725 056051 for further details.

*Please note that the lunch is limited to residents of the two villages or those that have moved away
but wish to stay in contact with friends*

Mendip Folk Dance Club

Mondays 9th, 23rd and 30th September

The Church Centre (St. James' Church Hall), Winscombe BS25 1BA

8.00 pm – 10.00 pm £3 per person

New dancers welcome (first night free of charge)

For further details contact Pat 01934 742853

COFFEE MORNING



Every Tuesday at 10.30 am
Church Centre, Winscombe
All Welcome

Gardening Notes for October

Creating a garden for pollinators

In what ways can we ensure that pollinating insects find what they need from our garden? Adult pollinators – bees, wasps, hoverflies, butterflies, moths and flower beetles are



extremely mobile, so can make use of flowers in trees and shrubs. Our climate is changing so it is important to have flowering plants to fill the calendar, not only in spring and summer but even in the middle of winter; plants such as Mahonia, Lonicera x Purpusii and Sarcococca. If you have ivy growing up walls or trees leave some to mature to the flowering stage

as this is one of the last sources of nectar and pollen in the year. While we grow short lived edibles and annuals for a splash of colour, it is good to have a backdrop of perennials to provide food for insects year after year.

Planting edibles and ornamentals together is an effective way of increasing pollination and therefore fruit quality. Prune clipped bushes such as Escallonia after flowering, also if space allows, cut hedges such as hawthorn and holly every other year to allow them to flower. Regular deadheading will encourage plants to produce more flowers over a longer period rather than going to seed, however some seed heads have valuable wildlife benefits, so be selective. Most herbs attract pollinators, but to do so they need to be allowed to flower, so if you need a regular supply of leafy herbs only harvest from half the plant.

Although a weed free lawn may look nice the odd flowering clover, dandelion or selfheal are both attractive and great for pollinating insects. Let a patch of grass grow long, it doesn't need to be a big area – just a strip along the base of a hedge or a circle in the middle of the lawn.



Mining bees need access to soil for nest burrows so retain some areas of patchy soil in the garden. Their presence can be detected by tiny mounds of soil each with a hole in the middle roughly the diameter of a pencil.

Refrain from using insecticide sprays on plants and flowers, nature can kick in with natural predators, including pollinators such as predator hoverflies; many pests can be removed by hand.

Some pollinators, drone flies for instance, need stagnant, organic-matter-rich puddles in which to develop. Shallow dishes of water or a patch of damp ground will be enough for flies, bees or butterflies to take a drink.

Churchill Reading Room

(Front Street, Churchill, BS25 5NG)

Now Open

Saturdays 10am-Midday

Come and see our



Lending
Library



Jigsaw Exchange

And enjoy some



refreshments



All Welcome

October Quiz Answers

So how was your pumpkin knowledge?

1. North America in particular Mexico
2. Cinderella
3. Large melon (The French adopted the word, transforming it to pom-poms. Later the British changed it to pumpkin and American colonists would come to know the word as pumpkin)
4. The Great Hall
5. Swimming (Unlike today competitions were held in open water and a string of hollowed out pumpkins acted as lane markers)
6. Squash
7. Jack Skellington
8. Canada
9. Pumpkin Pie
10. Peter



Here are a few more interesting **pumpkin facts!**

- ❖ Pumpkins are technically fruits rather than vegetables.
- ❖ There are hundreds of varieties of pumpkin.
- ❖ To be ready for October, plant your pumpkins in the first week of June.
- ❖ Pumpkins are packed with antioxidants.
- ❖ Pumpkins are good for your hearing!
- ❖ Each pumpkin produces about 500 seeds, and they are highly nutritious.
- ❖ Pumpkins are 80 -90% water.
- ❖ The female flower only opens for one day for pollination.
- ❖ The world record weight for a pumpkin is 2,624lb (heavier than many small cars!)
- ❖ Pumpkins were once considered a remedy for freckles and snakebites.



Places to go Pumpkin Picking locally.

- ❖ Frogmary Green Farm, South Petherton TA13 5DJ
Open during half term 9.00 am to 4.00 pm. Free entry - only pay for pumpkins you pick
- ❖ Thurloxtan Farm, Taunton TA2 8RH
Open 20th to 31st October. £12.50 per child includes one PYO pumpkin and games
- ❖ Picking Patch, Newbridge Road, Bath BA1 3NB
Open throughout October. Free Pumpkins start at £1
- ❖ Farrington's Farm, Farmington Gurney BS39 6UB
Open 1st, 2nd, 8th, 9th, 14th - 16th, 20th - 30th October. £2.50 per person. Under 2s: free

Things to do outdoors in October Half-Term



Head out to the Strawberry Line or a local wood and enjoy a stroll through the Autumn colours. Woodlands nearby include Kings Wood, Rowberrow Warren Wood and Goblin Combe.



Hunt for natural materials that have fallen to the ground such as coloured leaves, twigs, nuts, acorns, conkers and use them to create a picture.



Build a den. Autumn is a great time for den building as there are often fallen branches and leaves readily available, but don't do any damage to the woodland habitat.



Look for wildlife. Keep an eye out for squirrels foraging, deer and a variety of birds, some of whom might be migrating for the winter. The nature reserves on the Somerset levels are good for watching starling murmurations.



Explore nature using your senses. Listen to the sound of leaves crunching underfoot, feel shiny conkers and their prickly shells. See how many sights, sounds, scents and textures you can discover on a woodland visit.



Go fabulous fungi spotting but remember not to touch or pick them as some are poisonous. There are many different shapes, colours and sizes to see.



Make a bird feeder. Try using an apple, ideal for windfalls. Remove the core, push sunflower seeds into the apple for birds to eat. Push a stick through the apple for the birds to perch on and tie a piece of string around it so you can hang it from a tree.



Fly a kite on a windy day. You need a large open space, maybe a beach like Uphill, Brean or Burnham.



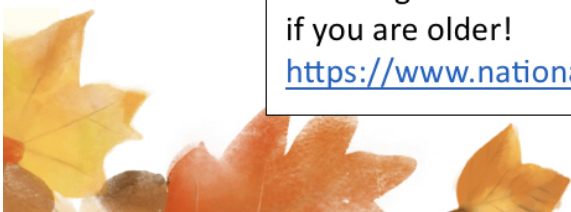
Play conkers. Try to find conkers that are not cracked, are symmetrical in shape and feel hard. Make hole in the conker and thread a piece of string about 20-30cm through and tie it. Challenge a friend to a game or two.



Cook on a campfire. Make sure an adult supervises this activity and that you light your fire in a suitable place. You could toast marshmallows or try some sliced apple with cinnamon on a stick. Make it sweeter with a little honey after you take it out the fire.

For more ideas of great things to do outdoors look at the National Trust's '50 things to do before you're 11 3/4' but don't think you can't have a go if you are older!

<https://www.nationaltrust.org.uk/visit/50-things>





SEPTEMBER EVENTS

On Wednesday 6th September the Branch held a General Branch Meeting in Wells Golf Club. Members met for coffee and were then treated to an excellent presentation given by Alan Whitfield from Weston Helicopter Museum titled; ***'An Engineers Journey from Metal File to Software File'***, that covered his career from training as a RN Artificer, being a helicopter



maintenance technician on board RN ships, helicopter engineering as a civilian and culminating as a software engineer. To finish, all had the opportunity to taste a tot of full-strength Navy Rum. The Chairman held a short meeting to discuss ideas for future branch activities

after which members enjoyed a lunch and drink chosen from the Golf Club menu and bar.



On Sunday 17th September at 10:15 am the Branch commemorated the Battle of Britain at a Service in St Cuthbert's Church, Wells, followed by wreath-laying at the Church War Memorial followed by coffee in the church.

OCTOBER PROGRAMME

Monday 2nd October at 11:00 am

This Branch Meeting will take place in Wells Golf Club, Blackheath Lane, Wells, BA5 3DS starting with coffee and followed by a 'Fun Quiz'. The event will conclude with an optional lunch at 1:00 pm chosen from the Golf Club menu and drinks from the bar.

Friday 13th October at 10:30 am

The Branch will visit the Weston-super-Mare Helicopter Museum, Locking Road, Weston-super-Mare, BS24 8PP assembling in the Museum Cafe for a tour conducted by Alan Whitfield at 11:00 am followed by an optional lunch in the Museum Cafe at 1:00 pm

All events are open to Branch Members, RAFA Members from other branches, current and ex-RAF service personnel (including RAF Reserves), current and ex-service personnel from the Commonwealth Air Forces, members of the 'RAF family' and members of the public that support the aims and purpose of RAFA. For further information please contact the Branch via rafa.midsomerset@gmail.com or call the Secretary on 01458 224057 for further information.



Trinity Singers and Costanzi Consort Joint Concert

14th October 2023

On Saturday 14th October two renowned local choirs, Trinity Singers and Costanzi Consort, will be joining forces in a celebration of English Music ranging from the devotional polyphony of William Byrd (1539-1623) to the sumptuous sound-world of Ralph Vaughan Williams (1872-1958).

They will be conducted by their Musical Directors (Andrew Tyrrell and Peter Leech) and accompanied by the strings of Lochrian Ensemble with soloists Zoe Maitland (Soprano), Peter Leech (Tenor) and Claire Alsop (Organ and Piano).

The programme will include Vaughan Williams' Serenade to Music and O clap your hands, performed by the combined choirs, and other pieces by English Composers performed by each individual choir.

This is a great opportunity to hear some of the best local musicians in the wonderful acoustic of

All Saints Church, Weston-super-Mare.

The concert starts at 7.30pm and tickets are available through the choirs' websites:-

www.trinitysingers.co.uk or www.costanziconsort.org.uk



For further information contact Bob Shapland (bob.shapland@btinternet.com) or Martin Warren (martin.warren@live.co.uk)



Wrington Vale Rotary Club

Sandford Festival Goes Off with a Boom!



The first ever HARVEST HOME FAMILY FESTIVAL, created as a joint venture between Wrington Vale Rotary Club and Mendip Activity Centre, was held on the last days of August and attended by some 500 people. It sold out within hours. Many families came and camped for the three days.

Families were rewarded with beautiful weather and so many events; the Outdoor Cinema with the Goonies on the Friday evening, the Fire Show and five live bands performing from a state-of-the-art stage were exceedingly popular. During the day youngsters were really spoilt for choice having so many activities available such as circus skills, climbing tower, archery, caving, skiing, abseiling, paddle boarding and bushcraft to mention just a few.

The Bands: Rocket Café, Daisy Chapman, The New Midrod Ends, The Baker Twine Boys and The Sirens really hit the spot.

We are indebted to the Mendip Activity Centre, and we are especially grateful to all our sponsors: Viewpoint, Thatchers, CRS, Ginby, RECO and many others. Also, to the team of volunteers who created this and worked so hard.

All profits will go towards local schools' initiatives and local Charities. See you all next year.

There are lots of photos on our Facebook page.

Details from Paul Jenkins 07722 122672



RESULTS UPDATE

The bucket collection at Sanders Garden Centre on 12th and 13th August raised £658 which was a good result and up £200 compared with the similar collection in 2022. In addition, the *'High & Dry Shanty Group'* donated £90 from their gigs and £60 was donated at the Wedmore Street Fair while the honesty stall at Winscombe Thursday Market continues to provide around £20 - £30 each week.

WINSCOMBE SHOW – SATURDAY 9th SEPTEMBER

Members of the Branch attended the Winscombe Show between noon and 4 pm to publicise the work and operations of the RNLI in Somerset and also to contribute to the fun and enjoyment of the hot September afternoon. The RNLI offerings included the branch display board, our Chairman, Allan selling a selection of jigsaw puzzles, a *'Stormy Stan'* photo opportunity for the children, *'Stormy Sue'* the scarecrow and a novelty hook a duck game. Local MP John Penrose was spotted hiding incognito behind "Stormy Stan" and "Stormy Sue" while eating his ice cream!



BRISTOL SHANTY FESTIVAL (BSF) – SATURDAY 23rd SEPTEMBER

The BSF was organised by the local *'High and Dry Shanty Group'*, who gathered 22 shanty crews to perform along the harbour front from 12:00 noon to 6:00 pm while supporters helped to collect donations. The funds raised will be dispersed between the RNLI; Somerset Prostate Support Association (SPSA), and Children's Hospice South West (CHSW). In the evening, the crews continued to sing at The Underfall Yard, on the harbour side; all the money taken during this period will go to the yard's recovery after the recent fire. This year, RNLI Winscombe Members wearing their shiny new RNLI crew shirts supported the Festival collecting cash in their buckets at a range of venues around Bristol Floating Harbour. Financial results will be reported in next month's edition.

RNLI WINSCOMBE FOLK NIGHT - FEATURING REG MEUROSS & COHEN BRAITHWAITE-KILCOYNE - SATURDAY 30th SEPTEMBER

RNLI Winscombe & District Branch held a full-length folk concert in St James's Church Centre, Winscombe featuring Reg Meuross who presented his stunning song cycle *'Stolen from God'* which examines the slave trade as viewed from the other side. It was hard-hitting, beautiful, poignant and uncomfortable to hear at times. The evening also featured the sparkling playing of concertina wizard Cohen Braithwaite-Kilcoyne. Songs included his single *'Good Morning Mr Colston'*. Results will be reported in next month's edition.

COLLECTION AT TESCO SUPERMARKET, NAILSEA – 21st and 22nd OCTOBER

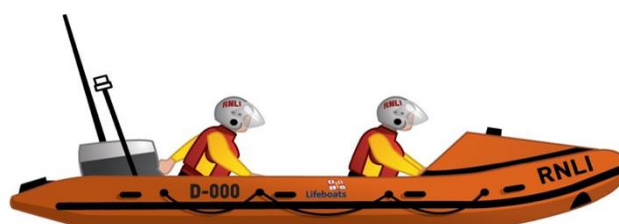
Once again RNLI Winscombe Members will be *'anchored at the mouth'* of Tesco Supermarket in Nailsea complete with *'rescue buckets'* on Saturday 21st and Sunday 22nd October ready to *'rescue cash'* from the shoppers. Results will be published in a later edition.

AUGUST SHOUTS

In August there were 9 shouts between our four Lifeboat Stations (Burnham-on-Sea – 1, Minehead 1, Portishead 5, W-s-M 2). One day, at 7:30 am the Burnham-on-Sea crew were paged after a 15m converted trawler was reported to be taking on water in the Bristol Channel, adjacent to Hinckley Point. The casualty vessel was en-route from Watchet Harbour to Portishead when ingress of water was discovered. The two-man crew immediately called *'Pan-Pan'* over their radio, which was quickly escalated to a *'Mayday'* call by Milford Haven Coastguard control. As well as the Burnham-on-Sea lifeboat, Barry Dock's all-weather lifeboat was called out and a Coastguard helicopter scrambled.

Burnham's Atlantic 85 Lifeboat made its way to the casualty craft which was some way off Hinckley Point. A crew member was landed on the vessel with the lifeboat salvage pump as the craft's engine room was still taking on water, but the salvage pump was not making headway and the craft settled lower in the water. By this time, Barry Dock lifeboat arrived on scene, and the two casualty crew were taken off while the pumping continued but the measures were not effective, and the vessel was not towable, sinking lower in the water. The Burnham crew member and the rescued crew were then transferred from the Barry Dock lifeboat to the Burnham lifeboat and were brought back to Burnham-on-Sea Lifeboat Station for aftercare. The Barry Dock lifeboat watched over the vessel until it sank completely.

Burnham Helm, Scott Rundle said: *"We put a crew member aboard the casualty vessel with our station salvage pump. By this time the water was rising faster in the engine room and the vessel was not recoverable."*





Quiz Night

In aid of South Sudan Refugee Crisis Appeal

(<https://www.christianaid.org.uk/news/where-we-work/south-sudan-refugee-crisis>)



6.30 pm for 7.00pm start

Friday 6th October

**Winscombe Church Centre,
Woodborough Road, BS25 1BA**

Tickets: £10 per person

(Buy tickets individually, or for teams of 5 people)

Please bring your own drinks

Light Supper – Raffle

**Tickets from: Janet Corry: 01934 842657, John Hayter:
01934 844656 or Angela Morris: 01934 852327.**

Pastoral Care Team

We are looking for caring, compassionate people who would be willing to give a little of their time to help those in our communities who are lonely, isolated or in need.

This might mean a visit or just an occasional phone call.

Training will be given to anyone who is interested.



Do you know someone who is feeling lonely, isolated or in need for any reason?

Our Pastoral Care Team is on hand to offer support.

If you would like any further information, please contact:

Reverend Pauline Nixon

07511 935860 revpolly@gmail.com

From the Diocese of Bath and Wells

Growing Chaplaincy

At a time when we are hearing about the growing secular nature of our society, it may be surprising to hear that, in Bath and Wells, almost every month there is a call from an organisation enquiring about getting a chaplain. The calls come from all types of settings from private companies, public sector organisations and educational institutions – and in the last six years, over 60 new chaplaincies have been established.



Mike Haslam, Chaplaincy Lead for Bath and Wells says, “While some chaplaincies have been initiated by local churches, the overwhelming majority have been requested by the organisations themselves, and they have mostly never before had any Christian or other spiritual ministry in their setting. People are seeking the spiritual Christian presence a chaplain can offer - it continues to amaze me, and I thank God for it.”

Chaplains in Bath and Wells come in all forms; lay and ordained, full time and part time, young and old, from all Christian denominations. They can be found in schools and hospitals, but also in golf clubs and the courts, walking the hedgerows and at power stations.

Explaining their popularity, Mike says, “Chaplains are part of the team where they are based dealing with the same codes, policies, culture and joys, but no-one has to talk to a chaplain so there is also that element of being a guest that can prove very powerful.” While chaplaincy is going from strength to strength in Bath and Wells, and across the country, it’s not all sunshine and roses.

Mike explains, “It can be a vulnerable position. It's not always easy to measure a chaplaincy’s success within the frameworks of either organisation or the church. However, I have enormous hope for the future of chaplaincy as together with our churches we seek to share with our communities the good news of Jesus.”

God's Representative

The Reverend Katy Garner, former Rector of Backwell with Chelvey and Brockley, was interviewed about chaplaincy ahead of her licensing as Chaplain at Bath Spa University.

What prompted the move from parish ministry?

I just felt that this is where God was calling me to be, despite the fact that Backwell is a very exciting place to be right now and is growing in spirituality.

Why university chaplaincy?

You could say I am very comfortable in a student setting. After a career in nursing, and a five- year gap to have a family, I decided to get a degree. A year of Open University study, a three-year degree at the University of the West of England, a PhD and a period as a Post Doc at Bristol University followed.

What do you think university chaplaincy offers?

Universities offer students a most exciting part of their education – they are set free, on their own, and for some that's an amazing and life-giving experience, but for a lot of people it can be very difficult and they need support.

How will you offer support?

As this is a new role, it will first be about journeying with students and staff and determining how chaplaincy can feature in this university. There is a secret garden with a fire pit, and I can have an allotment, so there's a lot of potential for activities that tie in caring for creation, and therefore ourselves. I'll also be taking along my dog as a care dog. As a chaplain you are not necessarily talking about God, but I absolutely view myself as God's representative in that place.

What are you looking forward to?

Ministering to this diverse, creative bunch of individuals is going to be really exciting and a real blessing for me. I hope I can become someone they can know and feel confident about to coming to with any problems, but also to share their joys.



What an Opportunity!



Recently, I was on a Zoom chat with some of our chaplains around the diocese. I meet regularly with eight or nine of them alongside our Chaplaincy Development Adviser Mike Haslam. These are only a few of the more than 300 chaplains we have, of all ages, lay and ordained, across Bath and Wells.

There are more and more enquiries about chaplaincy from a wide range of communities. They are seeking a chaplain to offer pastoral care and well-being support for an increasingly stressed and anxious workforce. One particular enquiry caught my attention.

A local Further Education college has been saying that their first concern is for a chaplain to address the spiritual exploration of its students. What an opportunity! We know from the Talking Jesus research (2015 and 2022) that most practising Christians come to faith before the age of 18. Several of our schools, including primary, have pupil chaplains now and this is a great way of recognising that you are never too young to start in living and telling the story of Jesus!

As a child I was always struck by the Old Testament story of the unnamed little slave girl who served Naaman's wife, (2 Kings chapter 5). Taken from her home to another country, and placed in an alien environment, she was the one who introduced Naaman to Elisha the prophet in Israel. As a result, Naaman overcame his scepticism, was healed from his leprosy, and discovered a faith in God.

Chaplaincy opens up a diversity of contexts in which we can share our faith and I invite you to pray for those here in Bath and Wells who are treading new ground to open up the way for others to discover the love of Jesus for themselves. However, each one of us has our own possibility of being a chaplain, coming alongside another in our daily life and community. Sometimes our timidity prevents us from speaking up about faith and our personal spiritual journey other than in church where we are known and on familiar territory. How about taking some time to reflect on where you might live and tell the story of Jesus outside of church, in your everyday context? Is there someone, like a Naaman's wife who is desperate to find help and hope for a loved one but doesn't know where to find it? Maybe you are the only one who could tell them!

With love and thankfulness for you all!

Bishop Ruth

Community Transport in Winscombe, Sandford and Churchill

We are fortunate to have a number of community transport schemes operating in our villages. We have included details of these schemes this month and will include a digest of this information in future editions.



The Churchill and Langford Minibus Society

The Churchill and Langford Minibus Society runs two minibuses and operates a schedule of trips every month to shops in Wells, Nailsea, Clevedon, Worle and Weston. In addition it also provides transport for members to their healthcare appointments and subject to availability runs non scheduled trips for its members.

In the past these have included Churchill Music, Theatres, Cinema, pub lunches, trips to the coast and social events etc.

To see the current schedule of trips please visit

https://www.churchillpc.org.uk/Minibus_Society_36635.aspx

The schedule is also advertised on various noticeboards around the villages.

To become a Society member of the Community transport scheme please contact one of the organisers listed on the schedule of trips who will explain about the trips and how to enrol as a member.

Sandford Helpline



If you are a resident of Sandford and require help with transport to medical appointments, please contact any of the following numbers

01934 820300

01934 852426

01934 822174

01934 822030

Please do not leave messages but keep trying until you get an answer.

Churchill Volunteer Driver Scheme

This is a self help scheme to assist those without transport to get to the optician, dentist, medical appointments or hospital visits.

Contact Kate on 01934853081 or Trevor on 01934 852589

Winscombe Contact Scheme

Transport available for medical and other health related appointments for all residents of Winscombe and / or patients of Winscombe Surgery.



To make arrangements please contact the transport co-ordinator on 07888 812398

Berry · Redmond · Gordon & Penney

Solicitors & Advocates

Local Solicitors you can trust.

Residential Property

Commercial Property

Family

Childcare

Wills & Probate

Criminal

Dispute Resolution Employment

Motoring Offences

Business Matters

Trusts & Tax



10 Woodborough Road,
Winscombe, BS25 1AA
Tel: 01934 842811

50 Boulevard,
Weston-super-Mare
BS23 1NF
Tel: 01934 414161

129a High Street Worle
BS22 6HQ
Tel: 01934 513963

FARRONS

SALES & LETTINGS

sales@farrons.co.uk

01934 842000

lettings@farrons.co.uk

FARRONS
SALES & LETTINGS

STAND OUT FROM THE CROWD

Computer Problems?

We come to you!



Services include:

- Upgrades
- Problem Solving & Repairs
- Broadband Problems
- Virus/Spyware Removal
- Performance Improvement
- Wireless Networking
- Websites
- New PC Systems

Microsoft
Partner

Engineer:

07973 536299

Office: 01934 853107

www.e-cps.co.uk

E-mail: sales@e-cps.co.uk

CPS computer
problem
solutions Ltd
Serving home & business users
for over 15 years
Local company based
in Congresbury

SHORT NOTICE VISITS OFTEN POSSIBLE EVENINGS & WEEKENDS ALSO AVAILABLE

D Ellis Electrical

Fully qualified to 18th edition Regs

No job too small - free quotations

- **Extra sockets/lights**
- **Re-wires**
- **New consumer units**
- **Test + inspect certificates**
- **Portable appliance testing**

Tel: 01934 842716
Mob: 07510 605 634

Brooking Ruse

chartered accountants

For our full range of services visit our website:

www.brookingruse.co.uk

Contact us for your **free** initial consultation:

01934 842828

mail@brookingruse.co.uk

40 Woodborough Road, Winscombe, Somerset, BS25 1AG

C V Gower Funeral Directors

The Square, Winscombe, BS25 1BS

† Independent Funeral Directors † Private Chapel of Rest

† 24 hr service, every day of the year

† Traditional, green & non-religious funerals arranged.

† All localities covered † Pre-paid Funeral Plans

Please contact **Lindsay Lawrence Dip.F.D.**
on **01934 842945** or mail@cvgower.co.uk



S.M.H. Property Maintenance

Decorators, Repairs, & Maintenance

For all your carpentry, plumbing, painting, walling, roofing and other repair and maintenance needs contact:

Steve Higgins
01934 852618
07891 673909

FREE Estimates
Insurance Work
No Job Too Small
24 Hour Emergency Service

Local English GCSE Tutor

Literature & Language

Hollyann Pye



ONLINE Group Classes (£12 / hour)

Shakespeare, context classes, poetry, creative writing,
A Christmas Carol, An Inspector Calls, and more...

Not sure? FREE taster webinars available!

Visit: www.cantocruncher.com
FB: Canto Cruncher Tutoring



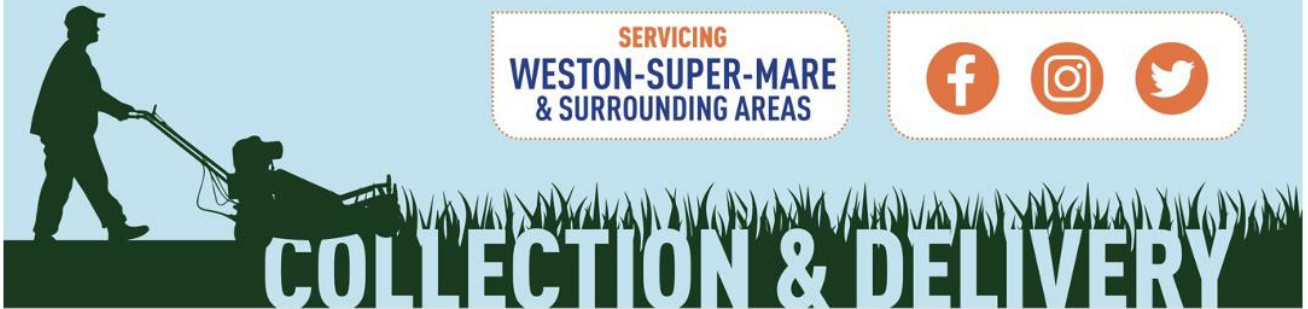
GARDEN MACHINERY

SERVICING • REPAIRS • PARTS • SALES

TEL: 07843 845 117

WEB: WWW.KJGARDENMACHINERY.CO.UK

SERVICING
WESTON-SUPER-MARE
& SURROUNDING AREAS



Fountain Tree Care

All aspects of tree work undertaken
Fully insured



- Hedge Cutting
- Logs For Sale
- Wood Chip For Sale

Paul Fountain N.C. Arb

Mob: 07720 082225

Tel: 01934 843118

Tincknell Fuels

Your Local Fuel & Heating
Specialists

- Reliable Fuel Deliveries
- Automatic Fuel Top-Up Service
- Gas & Oil Boiler Maintenance
- Gas & Oil Boiler Installations
- AGA & Rayburn Specialists



Call today - 01749 683911

WHY NOT?

Why not
advertise

HERE?

WHY NOT?

Email the magazine team:

parishmag2@gmail.com

CHAIR-BASED YOGA EXERCISE CLASSES AT THE CHURCH CENTRE, WOODBOROUGH ROAD, WINSCOMBE

- Do you feel a bit stiff & achy?
- Maybe you have arthritis or some other condition which would benefit from **some regular movement**?
- Do you want to feel more **flexible, stronger and energised**?
- Do you need to **learn to relax** and loosen up both mentally & physically?
- Would you like to **meet other people** in a fun and supportive environment?

If the answer is **YES**, then why not come along to our CHAIR-BASED YOGA EXERCISE classes every Thursday.

We meet from 2.00pm for coffee/tea followed by our yoga exercise at 2.30pm. No experience needed. .

Come and try your first class FREE of charge.

Phone/Text Haze 07980 697145 or email haze@accesstoyoga.co.uk



Quotes from clients:

“A good way to keep the body toned when mobility is difficult”.

“I did not expect to enjoy exercise!”

“It has social benefits for people like me who live alone”.

Chartered Financial Planners and Investment Brokers



Local (Taunton, Bath and West)
Long-standing (getting old!)
Ethical (no nonsense e.g. our fees are clear and on our website)

For **Real Expertise** around:

- Tax-Efficient Investments
- Pension Options for the Seriously ill
- Pensions at Retirement

www.quantockanalytical.co.uk

Tel: 01823 254183

hello@qtok.co.uk

Authorised and Regulated by the Financial Conduct Authority

Useful Telephone Numbers

Police	Non- Emergency PCSO Kayley Anderson	Call 101 07802 874658
Fire	Non-Emergency	01179 262061
Police, Fire, Ambulance		Call 999
Utilities - Emergency	Gas - National Grid Gas Electricity - Western Power Distribution Water - Bristol Water Water - Wessex Water (24 hour)	0800 111 999 Call 105 03457 023797 02456 004600
Health	NHS Health Enquiries Winscombe Surgery Banwell Surgery Mendip Vale, Langford	Call 111 01934 842211 01934 820113 01934 852906
Hospitals	Weston General Hospital Bristol Royal Infirmary Bristol Southmead Bristol Children's Hospital	01934 636363 01179 230000 01179 505050 01179 665881
Pharmacy	Boots, Winscombe	01934 843168
Dentists	Honeycomb Dental Clinic Winscombe Dental Practice	01934 842573 01934 842230
Veterinary	Alexandra and Hillyfields Vets Langford Vets Small Animal Practice	01934 843381 01934 852422
North Somerset Council	Information Out of Hours Emergency Environmental Problems Council Tax and Benefits Social Services	01934 888888 01934 622669 01934 888802 01934 888144 01275 888801
Parish Councils	Winscombe and Sandford Churchill and Langford	01934 844257 07399 523961
Assistance	Winscombe Contact Scheme Sandford Helpline Churchill Churches Volunteer Driver Scheme Samaritans (North Somerset) Citizens Advice Bureau Churchill and Langford Minibus	07888 812398 01934 852426 01934 852239 0330 094 5717 0808 278 7973 01934 852589
Schools	Winscombe Primary School Sandford Primary School Churchill Academy and Sixth Form Sidcot School	01934 843407 01934 852602 01934 852771 01934 843102

***We hope you have enjoyed reading Signpost.
Don't forget to send us your email address to receive next month's Signpost
and future editions.***