

*Putting the Love of Christ in the Heart of our Community*



# ***Signpost***



***Winscombe, Sandford and Churchill  
Parish Magazine***

October 2022

Free

## Who's Who in Winscombe, Sandford and Churchill Churches

<b>Vicar</b> St James the Great, Winscombe All Saints, Sandford St John the Baptist, Churchill	Reverend Andrew Hiscox The Vicarage, 11 Holstein Avenue, Winscombe, BS25 1EJ rev.andrew.hiscox@hotmail.com	07970 011502
<b>Church Centre Office</b>	52 Woodborough Road, Winscombe, BS25 1BA	01934 844650
<b>PCC Secretary</b>	Vacancy	01934 844650
<b>Churchwardens</b> St James the Great, Winscombe	Derrick Claridge winscombechurchwarden@gmail.com Ian Hine winswarden2@outlook.com	01934 843014 01934843961
All Saints, Sandford	Diana Williams sandfordchurchwarden@gmail.com Douglas Ogram douglas@ogram.com	01934 852449 01934 820972
St John the Baptist, Churchill	Tricia Avery averyfarm@cpsmail.co.uk	01934 852360
<b>Pastoral Care Co-ordinator</b>	Reverend Pauline Nixon revpolly@gmail.com	07511 935860
<b>Churchill Methodist Minister Pastor</b>	Reverend Meg Slingo Ken Young	01934 852314 01934 852686
<b>Lynch Chapel Pastor/Minister</b>	The Lynch, Winscombe, BS25 1AR Vacancy	01934 844401
<b>Sidcot Quakers Meeting House</b>	Oakridge Lane, Sidcot, BS25 1LT	01934 843065
<b>Roman Catholics</b>	Our Lady Queen of Apostles, Cheddar	01458 83593

### **We hope you will enjoy this copy of 'Signpost'.**

Future copies will be available by email or can be downloaded from the church website:  
[www.winsandchurches.org.uk](http://www.winsandchurches.org.uk)

If you would like to receive future copies in colour, electronically, please send your email address to [parishmag2@gmail.com](mailto:parishmag2@gmail.com)

A limited number of black and white printed copies are available from some local shops, each of our churches and the Church Centre (St James's Church Hall).

If you are unable to receive your copy by downloading it or by email please telephone the Church Office (01934 844650) and leave a message including your full name and address.

This magazine is one of the ways we are fulfilling our Vision

reach**ing**  
wel**com**ing  
car**ing**  
serv**ing**   
Teach**ing**

Putting the love of Christ in the heart of our community.



### Autumn by John Clare

I love the fitfull gusts that shake  
The casement all the day,  
And from the glossy elm tree takes  
The faded leaves away,  
Twirling them by the window-pane  
With thousand others down the lane.

I love to see the shaking twig  
Dance till the shut of eve,  
The sparrow on the cottage rig,  
Whose chirp would make believe  
That Spring was just now flirting by  
In Summer's lap with flowers to lie.



I love to see the smoke  
Curl upwards through the trees,  
The pigeons nestled round the cote  
On November days like these;  
The cock upon the dunghill crowing,  
The mill sails on the heath a-going.

The feather from the raven's breast  
Falls on the stubble lea,  
The acorns near the old crow's nest  
Drop pattering down the tree;  
The grunting pigs that wait for all,  
Scramble and hurry where they fall.



What is your favourite thing about Autumn? Is it the colours of the leaves, going for a long walk, jumping in big piles of leaves or trying to catch them as they fall?

It could be searching for that perfect conker or seeing the acorns fall from oak trees. Maybe its the smell of woodsmoke from bonfires or when fires are lit for the first time as the evenings draw in and inevitably get colder.

Many people find themselves experiencing feelings of awe and wonder at the beauty of the world in Autumn. When David the Psalmist saw some thing amazing in the world around him, the first thing he wanted to do was to praise God and he wrote these words:

**'At the works of your hands I sing for joy' (Psalm 92:4)**

All of creation praises God in its own time and way. Let us too praise him for both the grandeur of Autumn and the detail that can be seen in each colourful leaf.

## **Signpost - The Parish Magazine**

This magazine is created by volunteers from the Anglican Churches in the Benefices of Winscombe, Sandford with Churchill. It aims to serve and reach out to the local village communities and in doing so provide opportunities for the residents to become more aware of activities across all Christian denominations and within our villages.

## **Next Month's Magazine**

***The deadline for the November Magazine is Sunday 9th October.*** Please submit items as Word documents to [parishmag2@gmail.com](mailto:parishmag2@gmail.com) which should be no longer than 400 words. If you are including photographs please ensure that you have the permission of anyone appearing in the photograph for them to be published in this magazine. Please supply high resolution photographs as jpegs.

The Editorial Team reserve the right to amend or reformat submitted articles.

We are producing limited printed copies of 'Signpost' and encourage as many people as possible to receive their copy electronically.

If you would like to receive future editions of this magazine by email, please send your email address to [parishmag2@gmail.com](mailto:parishmag2@gmail.com)

## **Our Website**

[www.winsandchurches.org.uk](http://www.winsandchurches.org.uk)

Our website is the 'go to place' for information about our Churches and activities. It is regularly updated with the latest news and information.

- ❖ Home Page: latest news, monthly service plan
- ❖ Our Vision: find out about our plans for the future
- ❖ Church Life: our activities and groups
- ❖ Our Podcasts and Videos: a library of Church services to watch or listen to
- ❖ Parish Magazine: download the latest copy and find out how to contribute
- ❖ Hire A Venue: how to hire our Church Centre, Churches and meeting rooms

### **How To Find Our Churches - If you need directions to:-**

- St James the Great Church, Church Lane, Winscombe, BS25 1DE
- All Saints Church, Hill Road, Sandford, BS25 5NY
- St John the Baptist Church, Church Lane, Churchill, BS25 5QW
- Church Centre, 52 Woodborough Road, Winscombe, BS25 1BA

Please use your Satnav with the postcodes, or visit the website [www.achurchnearyou.com](http://www.achurchnearyou.com)

## Sandew House, Open Garden for Weston Hospicecare



The Reverend Ann Ogram and Douglas opened their 'Biblical Garden' on Saturday and Sunday 20<sup>th</sup> and 21<sup>st</sup> August. Over the weekend nearly 200 people visited to tour their garden and follow a trail taking in their Wild Area, Herb and Soft Fruit Terrace, Herbaceous Border, Shrubbery, The Coliseum, Vegetable Beds, Gravel Garden and the Eclipse Bed. Ann had written a booklet about many of the plants, and had annotated it with biblical references.



The weather was fine and the refreshments 'refreshing'. Donations given for the Hospice amounted to the magnificent sum of £1,350. They would like to thank all those who came, and all their helpers over the two days.

They followed this up with a Charity Café Church Service in the Church Centre on Sunday 4<sup>th</sup> September. The Reverend Karen Murphy, the Hospices' Spiritual Lead, spoke about the history of the hospice and the many facets of their wonderful work.

It costs £5 million a year to run with only 19% being contributed by the Government. That means that over £4 million has to be found through donations, legacies and fund raising. The collection at the service amounted to £372.30, and together with the proceeds from the Open Garden totalled £1712.30. This With Gift Aid added they were able to donate £2062.30 to help meet this year's target.



During the service the children made 'Bee Caring' bees to help them think about the theme the hospice being a place that cares.

# All Saints Church Community Café



The September cafe raised £336.87 including  
Gift Aid.

Many thanks to all those who supported us.

Our next cafes will be on  
**Saturday 1<sup>st</sup> October**  
**Saturday 5<sup>th</sup> November (Christmas Theme)**  
at All Saints

We serve coffee, a variety of teas and soft drinks along  
with homemade cakes, biscuits and soup.

We look forward to seeing you again.



**'Save The Children' Lunches**  
at  
**Shipham Village Hall**



Our lunches will be served at 12.30pm on

**Fridays 7<sup>th</sup> and 21<sup>st</sup> October**  
**Fridays 4<sup>th</sup> and 18<sup>th</sup> November**  
**Friday 2<sup>nd</sup> December**

Join us for soup, bread, cheese, pickle and homemade biscuits,  
tea or coffee  
£4.50

Payments will be taken on the door and all profits go to  
Save the Children charity.

For further details contact Amanda Firth on 01934 844232

# SOUP AND 'PUD' LUNCH

**SATURDAY 15<sup>th</sup> OCTOBER 2022**

**SANDFORD VILLAGE HALL**

**12.30 pm**



**There will be a variety of soups plus a selection of puddings**

**Tea and Coffee and Raffle**

**Tickets £6 adults; £4 children**

**Raising funds for All Saints Church**

**Tickets from Llyn Callow 01934 823484  
or at the Community Cafe in September  
and October**



**Old Station Millennium Green *Jumble Sale* Winscombe**

**2.00 pm Saturday 5<sup>th</sup> November**

**Winscombe Community Centre BS25 1JA**

**Please support this fundraising event for the Millennium Green community site.** Anything saleable, including white elephant, books, toys and bric-a-brac to cakes and produce appreciated. Items can be dropped at the Centre between 9.30 and 12 pm on the day or phone 01934 843461 for help.

**\*\* Have a 'turn-out' for us or come along and 'rummage' \*\***

Organisers: Winscombe & Sandford Millennium Green Trust



**During the autumn!**



**at our Church Centre, Woodborough Rd, Winscombe**

**\*October 8th 2.30-4pm**

**\*November 12th 2.30-4pm**

**\*December 10th 2.30-4pm**

**Bring Mum and/or Dad and come and join us! ....for....**

- Crafts**
- Songs**
- Bible story told through drama**
- Drinks and Snacks** **..and more!**

More information?... <https://winsandchurches.org.uk/messy-church/>

Or find us on Facebook : search for Winsand Churches Messy Church





**Refresh-men-t in October**

We will be starting our Autumn programme on Saturday 15<sup>th</sup> October at 9.30 am when we look forward to hearing a talk by David Hurst about his work with Mission Aviation Fellowship.

For over 75 years, MAF has been flying light aircraft over jungles, mountains, swamps and deserts. They enable more than 2000 aid, development and mission organisations to bring medical care, emergency relief, long-term development and Christian hope to thousands of communities.

We hope that we will be welcoming back all our regulars and of course, any new members too.

Current members should respond to the invitation sent out by email from Tim Harland. The usual delicious full English breakfast will be available. If you need an alternative please arrange this with Tim. ***Please reply to Tim by 8th October at the latest.***

For further information please contact Reverend Andrew Hiscox (07970 011502), Derrick Claridge (01934 843014) Douglas Ogram (01934 820972) or Tim Harland (01934 843248)

\*\*\*\*\*

***Churchill and Langford Ladies Lunch Club***

*We meet on the first Tuesday of each month  
at The Churchill Inn, Churchill at 12.30 pm for 1.00 pm  
£15 per head for a 2 course lunch with coffee.*

***Pre-booking is essential.***

*Contact Margaret Avery on 07725 056051 for further details.*

*Please note that the lunch is limited to residents of the two villages or those that have moved away  
but wish to stay in contact with friends*

# Jumble, Rumble, Upcycle



**Winscombe Community Association**



**Saturday**



**1<sup>st</sup> October**

**2.00 pm**

**Winscombe Community Centre, Sandford Road**

**Everyone needs a bargain in the Autumn!**

**Donations of jumble may be brought to the Community Centre  
from 9.30 am**

**Proceeds in aid of Winscombe Community Centre**

**For more information ring 07821 700634**

REGISTERED CHARITY NO.  
280231

## “Anything for our Beryl” as Sandford Station resident celebrates 100<sup>th</sup> birthday



When it came to celebrating her 100th birthday, Beryl Morton knew exactly what she wanted – and colleagues at the St Monica Trust’s Sandford Station retirement village were only too happy to help.

On 30<sup>th</sup> August, after getting her hair done, Beryl started her special day by sharing pastries with her friends and neighbours in the residents’ lounge, accompanied by a pianist playing a selection of her favourite music.

The celebrations continued with lunch in the Pullman Restaurant with family and friends, where she enjoyed a glass of Cremant de Limoux, a favourite wine which she and her husband used to drink in France, followed by a magnificent birthday cake.

Beryl said: “The staff are wonderful and they look after me very well. I’m just a straight-forward ordinary lady and I’ve done absolutely nothing at all to live so long. My father used to say it was all in the genes. I just know how to run my body and I know what I want, but I do get a bit naughty sometimes.”

Having a place she can call her ‘home’ has always been important to Beryl and for the last four years, her ‘home’ has been Sandford Station retirement village. Growing up as the daughter of a naval medical officer meant Beryl never lived anywhere longer than a couple of years.

Born in Malta, Beryl and her family moved regularly between Malta, the UK and Gibraltar, living in rented accommodation. She came back to live in England permanently when she was twelve years old when her father left the navy and bought a pub in the Hampshire countryside.

Beryl’s first home was a small cottage without running water or electricity down the lane from her parent’s pub, where she lived after getting married. Her husband, John, was on the planning committee for D Day and had to leave Beryl when she was eight months pregnant to serve overseas. It was three years before he returned from active duty and was reunited with their son, David who was born while he was away.

After the war, Beryl moved to London when John returned to his job working for Natwest Bank in the city. A move to Bristol followed when John’s department relocated and Beryl, feeling that city life was no longer for her, set up a home for her family in the countryside around Chew Magna.

Following the sad passing of her husband and son, Beryl made the decision to start looking for a retirement village. She said: “This is how I live my life. I woke up one morning and thought, ‘Right, I’d better start looking.’ My local GP was very good and it was him that brought me to Sandford Station.

“In the summer I can walk all the way around the retirement village or sit out in garden with a good book. People walking past can join you or you can join them. It’s lovely.”

Sandford Station retirement village is operated by Bristol-based charity, the St Monica Trust. Retirement Community Manager, Sam Pycroft said: “We’ll do anything for our Beryl and when she told us about her birthday plans, we were only too happy to help.

“She is a very popular member of the community and it was a real team effort between our Village Engagement Coordinator, Sam Lawn and Head Chef, Jeremy Basset to make all the arrangements for Beryl’s special day.”



## Quiz Night

In aid of East Africa Hunger Crisis Appeal

(<https://www.christianaid.org.uk/appeals/emergencies/east-africa-hunger-crisis-appeal>)



**6.30 pm for 7.00 pm start**

**Friday 14<sup>th</sup> October**

**Winscombe Church Centre,  
Woodborough Road, BS25 1BA**

**Tickets: £10 per person**

(Buy tickets individually, or for Teams of 6 people)

**Please bring your own drinks**

**Light Supper – Raffle**

---

**Tickets from**

**Janet Corry: 01934 842657 or John Hayter: 01934 844656**

# October Quiz.

This month's quiz has a seasonal flavour.

1. What is Autumn known as in North America?
2. Which English Romantic poet composed "To Autumn" after a walk near Winchester one autumnal evening?
3. What are hedgehogs' spines or quills made from?
4. The Oktoberfest is held annually in which German city?
5. Who did Autumn Kelly marry in May 2008?
6. The word "autumn" originated from the word "automne" in which language?
7. A lack of which pigment turns the leaves of some trees to yellow, orange, or red during autumn?
8. Who wrote the children's book 'The Tale of Squirrel Nutkin'?
9. The full moon closest to the Autumn equinox is traditionally known as a what?
10. In Autumn squirrels are starting to bury acorns. What is the bird that does the same?

*Answers can be found on page 31.*

## **Need a Venue for Your Event?**

We have several venues available to hire including our churches, Church Centre (St James's Hall) and smaller meeting rooms.

To find out more or to book please visit our online booking system at:

<https://hallbookingonline.com/winscombe>

# THE CHILDREN'S SOCIETY



**The  
Children's  
Society**

Firstly, thank you to all who helped us raise funds for The Children's Society outside Touts at Langford early in September. Sadly, for reasons beyond our control, we were only able to be there for one day (instead of two as planned) but we raised just over £250.00 which is brilliant - if

we had managed two days it might have totalled over £500.00!

When writing this, the Annual Box Opening and Coffee Morning has yet to happen but I am sure we shall have an excellent morning and your generosity will once again enable us to have raised a substantial amount of money over the course of 2022.

THANK YOU.

Winscombe St James' Children's Society Committee

\*\*\*\*\*

## West Mendip Orchestra



Are you looking for an orchestra in North Somerset?  
Do you want to try playing in a friendly orchestra?

West Mendip Orchestra (based in Winscombe, North Somerset) is having an open rehearsal on Friday 7<sup>th</sup> October, 7:45 pm at the Lynch Chapel, Winscombe, BS25 1AR.

We are a medium sized, friendly amateur orchestra. Our members come from a wide area including Bristol and Bridgwater, Wells and Weston-super-Mare.

We normally perform three concerts each year from the classical repertoire. Our concerts often feature well-known local soloists and also young talented musicians early in their careers. We rehearse from 7:45 pm to 10.00 pm on Fridays.

Further details from [secretary@west-mendip-orchestra.org.uk](mailto:secretary@west-mendip-orchestra.org.uk)

# come to Scramblers

A friendly,  
church toddler group for children  
from birth to 4 years  
and their parents/carers

Toys

Drinks &  
Snacks

Stories  
Both Bible &  
traditional

Singing

Craft Activities

Games

Thursdays 9.30am - 11.30am  
(term time only)

October 6<sup>th</sup>, 13<sup>th</sup> and 20<sup>th</sup>  
November 3<sup>rd</sup>, 10<sup>th</sup>, 17<sup>th</sup> and 24<sup>th</sup>

at The Church Centre, Winscombe

Contact Enid on 01934 842534 for more information



## *Celebrating 40 Years of Thursday Lunches in Churchill*



Amazingly, although the Thursday Lunches crew has changed over the years, there is still one of the original ladies welcoming and serving diners after 40 years – Janet Brown (third from the left). This incredible story of community service started in a very humble and insignificant way.

After the very ample Harvest Supper at Churchill Methodist on Saturday 9<sup>th</sup> September 1982, there was plenty of food left, so Mary (wife of then

Minister, Rev. Douglas Westington) and Mary Pockett served a lunch the following Monday in the 'library', a small side room, for 11 people. The following week, they put on another lunch and enlisted the help of Churchill & Langford Minibus Society (CLMS) to bring local folk who were without transport: 19 people came to enjoy the lunch with cheer and chat. This partnership between the Thursday Lunch team and CLMS continues steadfastly today.

As the reputation of Thursday Lunches spread, the number of diners outgrew the 'library' and moved into the much larger 'schoolroom', now known as the Methodist hall. Reverend Douglas was keen to be involved, so he rolled up his sleeves to wash the dishes most weeks. No one expected the lunches would be so popular. Surprised that they were still serving about 35 weekly lunches after 12 months, the celebratory photograph above was taken for a newspaper in January 1984. Back then, the price of a 4-course lunch was good value at £1. Before the pandemic, the delicious home cooked lunches were great value at £5.

Frugally, saving a tiny weekly profit, the team managed to purchase matching sets of cutlery to replace the 'mix and match' collection of church cutlery. By 1984-5 the heavy wooden trestle tables were becoming a nuisance, so Reverend Douglas paid £400 for a set of new-fangled 'Gopak' tables, which were much lighter to handle and easy to clean. The team started a weekly sales table which eventually repaid him. It was a very sound purchase because the tables are still in regular use, both on Thursdays and for many other events.

As the number of regular diners increased towards 50 each week, the church had to buy a larger cooker. By 1987, the elderly kitchen units were well past their 'sell by' and were replaced with modern 'flat pack' cupboards, fitted by church members Roger Rowe and Mike Evans. In fact, over the years, the number of diners had to be limited to 60, in order to ensure the dinner was still hot by the time the last people were served.



Janet remembers an unplanned menu change one particular day; Mary W had prepared a chicken casserole and left it in the kitchen on Wednesday evening. However, as there was no fridge and the room was warm overnight, the casserole spoiled and the team had to throw it away on Thursday morning. Thinking on their feet, Monica Moore was dispatched to buy cheese from Luke's Cider Shop, Shipham, and Janet went to Yatton for sausages. Later, the diners enjoyed cheese and potato pie with sausages!



In 2014, the kitchen was refurbished and updated. It now has 3 ovens, a microwave, fridge and freezer, together with a dishwasher (though washer uppers are still needed). The original cutlery wore out and the sales table funded another set, bigger pans and new crockery, as well as contributing to the church funds.

Due to the pandemic, although it is 40 years since Thursday Lunches were first served, there have actually been only 38 years of dinners. Founder Mary Westington is now 92 years old, living in Gloucestershire and Doreen Warford (from one of the early crews) lives in Bleadon. Other people in the top photograph have all been called to higher, heavenly office.

Post pandemic, the menu changed to 'Soup and Pudd'. Of course, the legacy of Thursday Lunches – to bring warm welcome, cheer, hospitality and community to local seniors - has passed to the current team: Janet, Niamh, Queenie, Sue, Sandra, Maureen, Angela. Janet hopes to continue serving lunches, so long as her health allows because, as she says, 'I believe that the company, friendship and care we share at Thursday Lunches is so vital for wellbeing.'



**Top photograph left to right:** Mary Pockett, Rev Douglas Westington, Janet Brown, Mary Hibbard, Mary Westington, Monica Moore, Maureen Herrstein.

**Middle photograph** showing typical diners in Churchill Methodist Hall.

**Bottom photograph left to right:** Janet Brown with Doreen Warford (who served lunches for many years) reminisce in August 2022.

**40** YEARS  
ANNIVERSARY

# THURSDAY LUNCHES

12.30pm @Churchill Methodist BS25 5NG

6, 13, 20 & 27 October 2022



- ✓ Traditional, friendly welcome to all
- ✓ Special diets ok
- ✓ Access ramp
- ✓ Transport available, ...inc for wheelchairs

Only  
£5

Mmm, tasty!  
... find out more,  
call Janet  
01934 852197

*Autumn Menu*  
Soup & Roll  
Pudding  
Or Dessert  
Tea or  
Coffee

[churchillmethodistchurch.org.uk](http://churchillmethodistchurch.org.uk)



The Methodist Church

# Rainbows celebrates their 35<sup>th</sup> birthday this year!!!!

Rainbows first opened in 1987

To celebrate, our Division visited the zoo and had a day of fun!!!

Follow Rainbows, and our other units on Facebook. Search "Girlguiding Strawberry Line" and click 'like'

<https://www.facebook.com/strawberrylininguiding>



We currently have 2 spaces in our 4-5yo group Thursday 3:30-4:15.

Rainbows is desperate for new volunteers. Please get in touch if you can help.

Contact Victoria Hogg 07588652479



## NEWS FROM THE LYNCH CHAPEL

“You are our refuge and strength, an ever-present help in trouble.” Psalm 46:1

As we head into Autumn with many uncertainties around us we can remember Psalm 46. If you are struggling in any aspect don't keep it to yourself. We are lucky to live in a caring community so find someone to talk to. I'm sure all the Churches are available to listen, encourage and support you in your need.



We had a lovely summer at Lynch Chapel. The Chapel echoed to the sound of children as each Wednesday morning during the school holiday we held our Children's Summer Pop-in sessions. It was aimed at pre-school children but older siblings were welcome to come along too, always important during school holidays. Activities ranged from play dough, decorating biscuits, drawing on fabric bags, to making sandwiches. The latter being for our annual end of summer picnic down on the Recreation Ground but I think most got eaten before we left the building! All being well we will be back next year.

Some of our regular activities took a break for August but we reintroduced our Coffee Morning – except by popular demand it became a Coffee Afternoon! Tea, coffee and home made cakes were enjoyed in the cool of the chapel while outside it was unbearably hot! Our next Coffee Afternoon is in the diary for 1<sup>st</sup> October 2.30 pm until 4.00 pm and I expect it will be cooler... You are all welcome.

We are now back in the swing of things with our Mid-week Service taking place on the first Wednesday of each month at 10.30 am. This is a short informal service and there is a box of toys available to entertain any children. Our weekly Sunday Service is also at 10.30 am and we can provide a Junior Church, creche or toys as required.

Knit & Natter is on the 2<sup>nd</sup> and 4<sup>th</sup> Wednesdays each month from 2.00 pm until 4.00 pm. Knit, crochet, macrame, sew or just natter over a cup of tea!

We are planning to hold our Family Film Club again this term, old children's favourites shown in a relaxed atmosphere on the big screen at Lynch Chapel. This is a family event, NO unaccompanied children please. The film is free but we normally sell refreshments. At the time of writing, we don't have a date but look out for the posters around the village when we do.

The Churches in Winscombe work well together, especially in respect of children's activities and you will find joint teams working with the babies and toddlers at Scramblers on a Thursday morning at The Church Centre, heading in to take Assemblies in the Primary School and holding family activities at Messy Church. So you should be able to spot some familiar faces.

September as it draws to a close is traditionally a time of harvest and giving thanks. We were reminded recently to count our blessings as we see natural disaster areas and war zones on the news channels. But we must remember even here, in our village, some will find this time more difficult than others. At Lynch Chapel we have a collection for the Cheddar Foodbank and you can bring along donations when the chapel is open for any of the above events even if you can't stay to join in.

If you want more information about any of these events (including lifts) or Lynch Chapel in general please visit our website: [lynchchapel.org.uk](http://lynchchapel.org.uk) or contact: 01934 733886.

## ***SEEKING CHRIST—SHARING LIFE—SERVING COMMUNITY***

\*\*\*\*\*

**The Church of England Benefice of Winscombe and Sandford with Churchill**

**Parochial Church Council of Winscombe and Sandford**

### **PCC SECRETARY**

We are looking for a volunteer to take on the role of PCC Secretary to the churches of St James the Great, Winscombe and All Saints, Sandford, with immediate effect.

At present the PCC meets monthly on the first Monday of the month, either at the Church Centre or All Saints Church. When the clocks change the meetings will be scheduled for 2.00 pm to 4.30 pm.

The role involves

Monthly

- Preparing the Agendas in conjunction with the Vicar and Churchwardens.
- Circulating the Agendas at least a week in advance of the meeting to PCC members.
- Attending the PCC meetings and taking the minutes.
- Producing draft minutes within a fortnight of the meeting and circulating them to the PCC members.
- Providing copies of the agendas and draft minutes to the Churchwardens for display in St James's Church, All Saints Church and the Church Centre.
- Dealing with PCC related correspondence.

Yearly (In April)

- Preparing the Agendas and associated documentation, to a fixed timescale, for the Annual Parishioners Meeting and the Annual Parochial Church Meeting.
- Producing draft minutes of the Annual Parishioners Meeting and the Annual Parochial Church Meeting.

If you are interested in volunteering for this role, or would like any further information please contact

Reverend Andrew [Hiscox](mailto:hiscox@hotmail.com)  
or Douglas Ogram

07970 011502  
01934 820972

[rev.andrew.hiscox@hotmail.com](mailto:rev.andrew.hiscox@hotmail.com)  
[douglas@ogram.com](mailto:douglas@ogram.com)



## Supporting Your Local Foodbanks



Our Churches support the **Cheddar Valley Foodbank** and the Foodbank based at the **For All Healthy Living Centre** in Bournville, Weston-Super-Mare.

There are collection baskets for each village in each of the churches and at the Church Centre.

The foodbanks also appreciate cash donations which can be used to buy items in particular need or provide vouchers that can be spent on food in local supermarkets.

Cash donations can be placed in the postbox at the Church Centre in Winscombe. Please label to show whether your donation is for the Cheddar Foodbank or the For All Healthy Living Centre.

\*\*\*\*\*

### **Folk .. Yes but all kinds of music and verse.**

**Fourth Tuesday each month 7.30 to 10.30 £2**

Upstairs Bar, Winscombe Club, 7 Sandford Road.

A quiet and respectful acoustic space for performers and audience.

Further information from Nigel Carson, 07551 197 685 or [winscombefolkclub@gmail.com](mailto:winscombefolkclub@gmail.com). Also on Facebook.



\*\*\*\*\*

## **Mendip Folk Dance Club**

**Mondays 10<sup>th</sup> and 24<sup>th</sup> October**

The Church Centre (St. James' Church Hall), Winscombe BS25 1BA

8.00 pm – 10.00 pm £3 per person

New dancers welcome (first night free of charge)

For further details contact Pat 01934 742853

\*\*\*\*\*



### **Winscombe W.I.**

You are welcome to join us for our next meeting.

**Wednesday 12<sup>th</sup> October**

at 7.00 pm for a 7.30 pm start

at 'The Church Centre', Winscombe

Our guest speaker, Luke Lyons will talk about the valuable work of 'Avon Fire and Rescue Service'

Refreshments will be available and we hope you will be able to come along and join us.

Carol Hudson (Secretary)

*Come join the fun with*  
**Churchill Baby & Toddler Group**

**Mondays 9.00 – 11.30am**  
**3, 10, 17 & 31 October 2022**  
**@Churchill Methodist Hall BS25 5NG**

**Try us for FREE!**



- ✓ Friendly welcome
- ✓ Cake & cuppa
- ✓ Children's snack
- ✓ Large hall
- ✓ Lots of toys
- ✓ Change station
- ✓ Easy parking



**INFO: 01934 844134**

Jacqueline

[churchillmethodistchurch.org.uk](http://churchillmethodistchurch.org.uk)



Thank you to all our supporters

The **Methodist** Church



## The Winscombe Village Show



### *A roaring success!*

Despite the drenching weather prior to the show, the clouds cleared for a dry, even sunny afternoon.

After months where we were unsure whether there were enough of us to run the show, our leaflets pleading for helpers yielded treasure, resulting in an extra half a dozen volunteers.

Our slimmed down show, with fewer classes, was well supported. The weeks of searing sunshine adversely affected fruit and

vegetable entries and reduced the floral numbers.

However, it would seem we have a village full of young bakers, eager to gain experience before auditioning for Bake Off. The judges were hard pressed to choose adult winners of cakes and sponges.

Out on the field, visitors were tempted by stalls selling, games to be played, prizes to be won, castles to be bounced.

In the arena we were dazzled by young dancers, entertained by youngsters eating doughnuts hands free, and adults forcing down dry Crackers before drinking a glass of cider. The choirs, including our own Winscombe Community Singers, sang their hearts out.

In deference to the death of our Monarch, we had a two minute's silence, where hush spread across the previously noisy field. The day was rounded off with a joyous rendition of the National Anthem, albeit with some indecision over lyrics!

We are hugely indebted to our village stores and traders. Though times are tough, they outdid themselves with offers of goods and services as raffle prizes. Our thanks go to them.

Preliminary figures indicate we raised in excess of £4,000 towards maintenance of the Village Community Centre.

I think this may have been an introduction to village life for many newcomers. We hope you enjoyed it and look forward to seeing everyone again next year.



Follow Brownies, and our other units on Facebook.  
Search "Girlguiding Strawberry Line" and click 'like'

<https://www.facebook.com/strawberrylineguiding>



Helpers needed on January 14<sup>th</sup> for Brownies!

10-11am, Winscombe Community Centre

You will be interviewed by 7-10 year olds about your job!  
Especially looking for roles that inspire girls beyond stereotyping.

Please get in touch if you can help.

Tea and biscuits provided.



Some of the badges we have earned since we opened at Easter.

We are excited to be back after the summer break and to start earning more!!!


Unfortunately, our Brownie unit is full. There are spaces at 1<sup>st</sup> Strawberry Line Brownies and 1<sup>st</sup> Churchill Brownies, or you can join our waiting list.

Apply online for any of these options at  
<https://www.girlguiding.org.uk/information-for-parents/register-your-daughter/>

**OCTOBER 2022 – DIARY**

SAT 1	10.30am	Sandford Community Café – All Saints
<b>SUN 2</b>	<b>TRINITY 16</b>	<b>ORDINATION OF OUR CURATE, JACQUI, AT WELLS CATHEDRAL</b>
		<b>See opposite page for details of Services</b>
TUES 4	10.00am	Midweek Communion – All Saints Church Room
	10.30am	Coffee Morning – Church Centre
WED 5	7.15pm	Choir Practice – St James’s
	7.30pm	Sandford & District Gardening Club – Sandford Village Hall
THURS 6	9.30am	Scramblers - Church Centre
	10.00am	Communion in the Community - Dunster Court
	7.30pm	Bell Ringing – St James’s
SAT 8	2.30-4.00pm	Messy Church – Church Centre
<b>SUN 9</b>	<b>TRINITY 17</b>	<b>See opposite page for details of Services</b>
MON 10	9.00am	Scramblers – Church Centre
TUES 11	10.00am	Midweek Communion – All Saints Church Room
	10.30am	Coffee Morning – Church Centre
WED 12	7.00pm	Winscombe WI – Church Centre
	7.15pm	Choir Practice
THURS 13	9.30am	Scramblers - Church Centre
	7.30pm	Bell Ringing – St James’s
FRI 14	6.30pm	Christian Aid Quiz Night – Church Centre
SAT 15	9.00-1.00pm	Winscombe Saturday Market – Community Centre
	9.30am	Refresh-Men+ - The Railway Inn, Sandford
	12.30pm	‘Soup & Pud’ Lunch – Sandford Village Hall
<b>SUN 16</b>	<b>TRINITY 18</b>	<b>See opposite page for details of Services</b>
MON 17	9.00am	Scramblers – Church Centre
TUES 18	10.00am	Midweek Communion – All Saints Church Room
	10.30am	Coffee Morning – Church Centre
WED 19	2.45pm	Communion in the Community – Sewell House
	7.15pm	Choir Practice – St James’s
THURS 20	9.30am	Scramblers - Church Centre
	7.30pm	Bell Ringing – St James’s
<b>SUN 23</b>	<b>LAST SUNDAY AFTER TRINITY/BIBLE SUNDAY</b>	<b>See opposite page for details of Services</b>
TUES 25	10.00am	Midweek Communion – All Saints Church Room
	10.30am	Coffee Morning – Church Centre
WED 26	7.15pm	Choir Practice – St James’s
THURS 27	7.30pm	Bell Ringing – St James’s
<b>SUN 30</b>	<b>ALL SAINTS DAY/ALL SOULS</b>	<b>See opposite page and page 49 for details of Services</b>

**BIBLE READINGS FOR OCTOBER**

<p><b>Sunday 2<sup>nd</sup> October</b>                  Habakkuk 1: 1-4, 2: 1-4                  Psalm 37: 1-9                  2 Timothy 1: 1-14                  Luke 17: 5-10</p>	<p><b>Sunday 9<sup>th</sup> October</b>                  2 Kings 5: 1-3, 7-15                  Psalm 111                  2 Timothy 2: 8-15                  Luke 17: 11-19</p>	<p><b>Sunday 16<sup>th</sup> October</b>                  Genesis 32: 22-31                  Psalm 121                  2 Timothy 3: 14-4:5                  Luke 18: 1-8</p>
<p><b>Sunday 23<sup>rd</sup> October</b>                  Isaiah 45: 22 - end                  Psalm 119: 129-136                  Romans 15: 1-6                  Luke 4: 16-24</p>	<p><b>Sunday 31<sup>st</sup> October</b>                  Daniel 7: 1-3, 15-18                  Psalm 149                  Ephesians 1:11- end                  Luke 6: 20-31</p>	

## Church Service Times Opportunities to Worship in October

Sunday 2 <sup>nd</sup> October	8.00 am	St John's	BCP Holy Communion
	10.30 am	Wells Cathedral	Jacqui Keir-Bucknall Ordination
Sunday 9 <sup>th</sup> October	9.30 am	St James's	Holy Communion
	11.00 am	All Saints	Parish Praise
	11.00 am	St John's	Holy Communion
Sunday 16 <sup>th</sup> October	10.00 am	Church Centre	Family Holy Communion
	11.00 am	All Saints	Parish Praise
Sunday 23 <sup>rd</sup> October	9.30 am	St James's	Holy Communion
	11.00 am	All Saints	Holy Communion
	11.00 am	St John's	Parish Praise
Sunday 30 <sup>th</sup> October	11.00 am	All Saints	Patronal Holy Communion
	3.00 pm	St James's	All Souls Remembrance and Thanksgiving

### Midweek Services

Every Tuesday                      All Saints                      10.00 am                      Holy Communion

### Special Services October

Thursday 6<sup>th</sup> October              Dunster Court              10.00 am              Communion in the Community  
Wednesday 19<sup>th</sup> October              Sewell House              2.45 pm              Communion in the Community

#### We Welcome

**Eleanor Elizabeth Rose Walton** to our church family in Sandford. She was baptised at All Saints Church, Sandford on Sunday 11<sup>th</sup> September 2022.

#### We Congratulate

Our love and congratulations go to

**Michael Charles Ludlow** and **Anna Elizabeth Prior** who were married at St James's Church, Winscombe on Saturday 10<sup>th</sup> September 2022.

**Joseph Reed** and **Melanie Hill** who were married at St James's Church, Winscombe on Friday 16<sup>th</sup> September 2022.

#### We Remember

Our love and sympathy go to the families and friends of

**William Robert Du Croz** whose funeral took place at St James's Church, Winscombe on Saturday 3<sup>rd</sup> September 2022.

**Richard Webb** whose funeral took place at St James's Church, Winscombe on Wednesday 14<sup>th</sup> September 2022 followed by burial at Ilex Lane Cemetery.

**Kathleen Whitehead** whose funeral took place at Weston Crematorium on Tuesday 20<sup>th</sup> September 2022.

**Michael Stanley Bridges** whose funeral took place at St James's Church, Winscombe on Tuesday 27<sup>th</sup> September 2022 followed by burial at Ilex Lane Cemetery.

## Bright Eyed and Bushy Tailed!



The red squirrel, as pictured on this month's cover, is one of our most iconic, native small mammals, bringing back childhood memories of stories such as Beatrix Potter's Squirrel Nutkin.

Unfortunately since the introduction of grey squirrels in Victorian times, red squirrel numbers have dramatically declined. The red squirrel is a protected species in the UK officially classed as endangered in England and Wales and near threatened in Scotland.

The nearest place to North Somerset to see red squirrels in the wild is Brownsea Island whereas the grey can be seen in our local area.

### Did you know?

**They aren't strictly red!** The red squirrel is usually a lovely rusty colour but in winter their coats fade to more of a brownish-grey. Their fur colour can also be affected by genetic mutations. You might see a squirrel that's so dark in colour it may appear black, or one with a bushy blonde tail!

**They have a carnivorous side.** Red squirrels are predominately vegetarian, but they are known to occasionally eat small birds and their eggs.

**They are 'nature's tree planters'.** They occasionally forget where they stashed their winter food supply! These nuts and seeds buried in the ground are often left after the winter, allowing them to grow into trees and expand the squirrel's natural habitat.

**They don't hibernate.** Red squirrels store food over winter because, unlike many other small mammals, they do not hibernate. This ensures they have enough to keep them well fed until the spring comes and a new bounty of food appears. During the winter they are less active as they require more energy to keep warm.

**They live in nests.** Red squirrels build nests in trees called dreys. They tend to be built out of moss, twigs and grass close to the trunk of a tree. While mostly solitary creatures, in the winter they will sometimes share a drey in order to keep each other warm.

**They're good at reproducing!** Red squirrels live for about six years and can start reproducing within their first year. After this first year they can have two litters annually, with up to 6 kittens being born each time. This means potentially, one female can have up to 66 kittens in her lifetime!

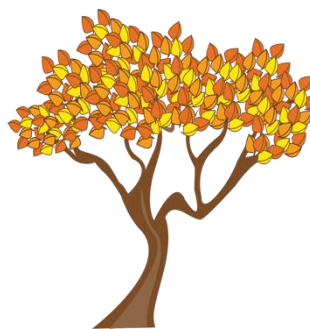
**No ear tufts? No problem!** Red squirrels usually have lovely ear tufts. However, during periods of moulting, particularly at the end of the summer, they may temporarily lose these tufts. They do grow back though.

**They're not afraid to take a dip!** Although rarely seen, red squirrels can swim! 8 years ago, one was seen in the middle of Ullswater in the Lake District, much to the surprise of tourists aboard a boat. The squirrel had swum out over 300 metres.

**They have a fantastic grip on things.** Red squirrels are very dexterous, and are both right and left handed. This is so they can hold and extract nuts and seeds, as well as climb well through the tree canopy. They have four fingers and five toes on each paw and foot.

## October Quiz Answers

1. Fall
2. John Keats
3. Keratin
4. Munich
5. Peter Phillips (Son of Princess Anne)
6. French
7. Chlorophyll
8. Beatrix Potter
9. Harvest Moon
10. Jay



\*\*\*\*\*

### Autumn Family Walks

Here are some just a few ideas for places to visit in the local area to enjoy a walk and the Autumn Colours. If you're going with children why not set them a Scavenge Hunt to find Autumn items such as an acorn, conker, feather, bright red leaf etc?



### The Strawberry Line

Enjoy the Autumn colours in Winscombe and Sandford with a walk along the Strawberry Line.

### Weston Woods (Worlebury Woods)

Weston Woods, also known as Worlebury Woods, covers an area of 130 hectares with walking paths clearly signposted and certain areas have been surfaced for wheelchair access.

### Cheddar Gorge and Burrington Combe

There are many different walks in and around the Gorge and Combe with directions to be found online.

### Tyntesfield

#### *Golden Tree Walk*

Discover the finest views and vantage points and best trees for autumn colour. The walk follows waymarked routes on the estate.

#### *Autumn Adventures Trail*

View the map on your phone or print the trail at home before heading out for a wander and see how many adventures you can have.

<https://www.nationaltrust.org.uk/tyntesfield/features/autumn-at-tyntesfield>

### Bishops Palace Wells

#### *October Half Term Family Treasure Hunt Trail.*

Trails can be collected on arrival and a small prize is available on completion!

All October Half-Term events are included with any standard admission ticket to The Bishop's Palace. Pay once and visit all year:

**We know it's too early but .....**

**Save the Date!**

**Saturday 10<sup>th</sup> December**

This is when we will be holding a special event for the whole community, young and old (and those in between)!

If you enjoyed the Jubilee Celebrations why not come to

**Carols by Lantern Light**



**In the Church Centre Car Park in Winscombe  
from 4.45 pm.**

It will be an opportunity to join with friends and family to sing traditional carols and songs together, whilst enjoying some seasonal refreshments.

The acclaimed Weston Brass Band will be providing the accompaniment and there will be a special visitor too!

Indoor or outdoor seating will be provided for those who need it.

In case of inclement weather we will hold the singing indoors.

Badgerset Return  
for their annual Christmas Concert  
Saturday 3rd December 2022  
at St James's Church



*Hold the date!*

## **Folk at Christmas**

Yes it's true. Badgerset will be back for an evening of music, dance and humour at their Christmas Concert on Saturday 3rd December at St James's Church. Join in with some familiar carols and, as usual, expect the unexpected! Full details of tickets will be available in next month's Signpost, but if you can't wait that long please contact Martin Hagen on 01934 842511 or by email at [hagen.martin@gmail.com](mailto:hagen.martin@gmail.com) for further details.



**Family Services at the Church Centre**

(St. James's, All Saints and St. John's)

**Join us on**

Sunday 16<sup>th</sup> October: Family Holy Communion 10am

Please note that there is no Cafe Church this month due to our Curate's ordination in Wells Cathedral

Children's activities including lego, colouring and crafts.



**What could you do with a grant from the Village Fund?**

The Village Fund exists not only to promote the community of the parish of Churchill and Langford through local events, but also to donate money to organisations operating within the Parish boundary to contribute to the cost of the provision of education, environmental or recreational amenities.

To raise a request, all you need to do is to write to Ian Beadle, providing the details, explaining how the proposed project meets the above criteria and setting out how your organisation is contributing towards the cost (fundraising etc.). The Village Fund is in funds at the moment and whilst we do need to retain some working capital, we exist to give the money back to our community.

Our grants tend to be of the order of £100s rather than £1000s.

Contact Ian Beadle [churchillian67@gmail.com](mailto:churchillian67@gmail.com)

\*\*\*\*\*



**The Churchill and Langford Minibus Society**

The Churchill and Langford Minibus Society runs two minibuses and operates a schedule of trips every month to shops in Wells, Nailsea, Clevedon, Worle and Weston. In addition it also provides transport for members to their healthcare appointments and subject to availability runs non scheduled trips for its members. In the past these have included Churchill Music, Theatres, Cinema, pub lunches, trips to the coast and social events etc.

**To see the current schedule of trips please visit**

**[https://www.churchillpc.org.uk/Minibus\\_Society\\_36635.aspx](https://www.churchillpc.org.uk/Minibus_Society_36635.aspx)**

To become a Society member of the Community transport scheme please contact one of the organisers listed on the schedule of trips who will explain about the trips and how to enrol as a member.

The Society is always looking to recruit new organisers and drivers so if you have some spare time then we would love to hear from you. The Chairman’s details are on the journey schedule. The Society also provides the opportunity to make new friends and help you reduce your carbon footprint.



## Gardening Notes for October

### Herbaceous Borders in Autumn



It is very tempting at this time of the year, when the borders are not at their best to chop everything down in an effort to tidy up. Before you do that take stock, it may not be necessary to cut everything back and there might be several good reasons to keep some of the foliage.



Some plants like to have their foliage left over the winter, it helps to protect them from frost and they can be cut back in March when they start producing new foliage. Penstemon, fuchsia and caryopteris need this sort of protection. If you cut everything back you will be left with nothing in the borders.



Artemisia, aster and heuchera can all be tidied up in the spring. Leave grasses until February or March then cut them back to the ground this will provide structure to the garden during the winter.



A dusting of frost or cobwebs on teasels and alliums can look attractive. Also think about the beauty of seed heads such as poppies, echinops, eryngium and echinacea, these not only look good but provide a valuable source of food for birds and shelter insects. There are exceptions however such as decaying foliage which should be removed as this can harbour slugs.



Now is a good time to move those plants that are in the wrong place, retain a good root ball when lifting and add a handful of bonemeal to the planting hole and water well. This will allow plenty of time for the roots to get established before the soil temperature drops. Divide up any congested early flowering perennials, discarding the woody central portion, later flowering plants prefer to be divided in the spring. Hosta for instance establish well at that time of year.



Fill any empty spaces with bulbs which should be planted as soon as possible, with the exception of tulips which should be left until November. Prune back hybrid tea and floribunda roses by a third to prevent wind rock, a final pruning can be carried out in March, this also applies to buddleia.



It can also be beneficial to apply a mulch of compost or well rotted manure to the borders, a layer 3" deep is ideal. Empty out hanging baskets and containers which are now coming to the end of their flowering period and replant with autumn, winter and spring flowering plants, use fresh compost and add slow release fertiliser granules.

**SANDFORD & DISTRICT  
GARDENING CLUB**

**PRESENT**

**Brian Carlson**

**WHO WILL BE GIVING A TALK  
ENTITLED**

**'All about Fuchsias'**

**ON WEDNESDAY 2nd NOVEMBER 2022  
AT 7.30PM**

**IN  
SANDFORD VILLAGE HALL**

**THERE WILL BE A SHORT A.G.M MEETING AFTER.**

**THERE WILL BE REFRESHMENTS AND A RAFFLE.  
NEW MEMBERS ARE ALWAYS WELCOME OR COME AS A VISITOR.**



# Men Get Cooking!

*New Course Dates*

**Starts: FRIDAY 4 November 2022**

**@Churchill Methodist BS25 5NG**



Oh dear, what can I cook for supper?

Is it done yet?

**Enjoy a very friendly Cookery Course:**

- **Build skills over 6 weeks**
- **Great for beginners & all abilities**
- **Bring own ingredients**
- **Cook, then eat at home**
- **Experienced tutor**
- **Handbook provided**
- **Choice of recipes**
- **Special diets are ok**
- **Six sessions**
- **09.30- 11.30**
- **Cost only £42**

**INFO & BOOKINGS:**

**Jacqueline**

**01934 844134**

The **Methodist Church** 

[churchillmethodistchurch.org.uk](http://churchillmethodistchurch.org.uk)

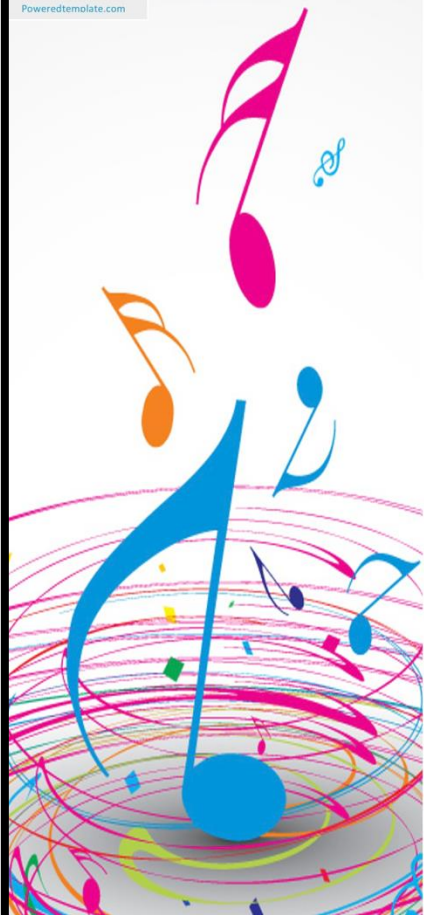
# THE MARKET KITCHEN



MARKET KITCHEN  
COMMUNITY CAFE  
NOW OPEN

COMMUNITY HALL,  
LADYMEAD LANE,

Poweredtemplate.com



If you love singing ...  
we'd love you to join us.



## Winscombe Community Singers

Have fun, make friends and enjoy singing.

Tuesday evenings 7.30pm - 9.00pm  
Winscombe Community Centre

Musical Director: Joshua Newport

For further details please contact  
Simon Page on 07900 693783

[www.winscombecommunitysingers.co.uk](http://www.winscombecommunitysingers.co.uk)



## Wrington Vale Rotary Club

### Clay Pigeon Shoot



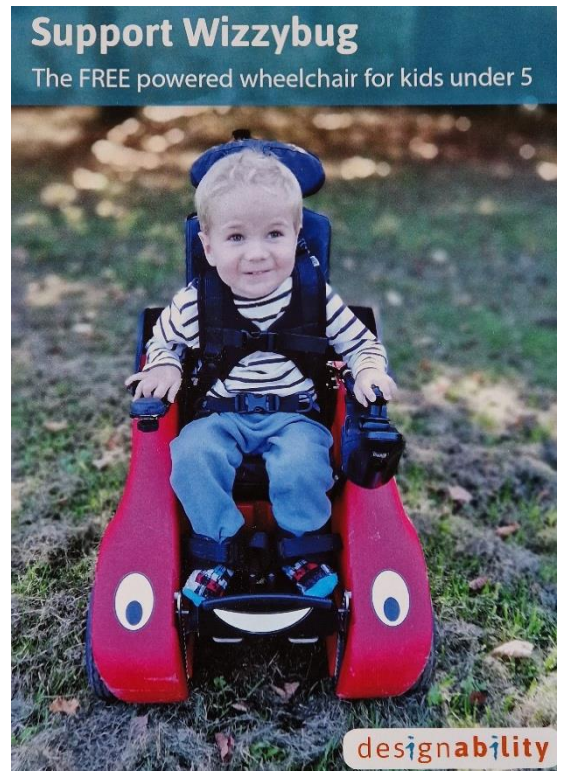
The Roy Hunt Memorial Trophy was established in 2018 by John Thatcher in memory of his fellow Rotarian friend. The shoot took place in the Orchard after being suitably nourished with bacon butties. This was a light hearted affair encouraged by the professionals. The winner this year was Ivor Metherell who received the Cup from Mrs Joan Hunt

The picture shows Ivor Metherell receiving the Cup from Mrs Joan Hunt

### 'Designability' and 'Wizybug'

Spike Parker from Chelwood Bridge Rotary Club spoke about 'Designability', a charity based in Bath blessed with creative engineers who listen to requests from people with disabilities and come up with practical solutions. To date they have helped 300,000 people. They have designed simple clocks for people with dementia, music players, radios and much more. In each case a need is developed into a prototype and then passed on to a commercial company.

Various aids for disabled children have been successfully developed by Designability, but the highlight is the Wizybug, a wonderful battery operated chair, which is adjustable as the child grows and gives the very young freedom to move for themselves. These cost about £5k. To cope with the expense, a free loan scheme has been set up, which not only helps youngsters to have the use of their Wizybug, but also makes sure it is returned. Clearly this is very expensive and donations are very much appreciated. There is so much more, which can be found at: [www.designability.org.uk](http://www.designability.org.uk)



Details from Ivor Metherell 01761 462607 or Angie Biggs on 07790 400718



## TECH LEARNING & SUPPORT SESSIONS

---

FROM CHURCHILL PARISH COUNCIL AND OUR WONDERFUL VOLUNTEERS

**For More Information :**

[clerk@churchillpc.org.uk](mailto:clerk@churchillpc.org.uk)

JOIN OUR NEWSLETTER



**EVERYONE IS INVITED TO LEARN SOMETHING NEW OR OVERCOME A 'TECHY KNOW-HOW NIGGLE'**

**MASTER YOUR COMPUTER, SMART PHONE, TABLET OR OTHER TECHNOLOGY FOR FREE**

**EVERY FRIDAY  
10.00AM -11.30AM '  
MARKET KITCHEN' CHURCHILL'S  
NEW COMMUNITY CAFE  
NEXT TO THE  
VILLAGE HALL**

# CREATE! Sunday

Sunday 15 October 2022

4-6pm @ Churchill Methodist Hall

There's No Place Like Home



- ✓ Family Friendly, including Seniors
- ✓ Fun activities & crafts
- ✓ Storytime & songs
- ✓ FREE buffet tea



INFO & DIET:  
Call Jacqueline  
**01934  
844134**

Supported by Churchill Methodist The Methodist Church  
[churchillmethodistchurch.org.uk/services](http://churchillmethodistchurch.org.uk/services)

## ROYAL AIR FORCES ASSOCIATION MID-SOMERSET BRANCH NEWS

Royal Air Forces Mid-Somerset Branch resumed its 2022 programme with a Late Summer Lunch on 5<sup>th</sup> September at Wells Golf Club. This was also a centenary birthday celebration for Dick Froom, one of our Branch Members.



Flight Sergeant Richard Froom trained as a Wireless Operator Air Gunner (WOpAg) during 1943/1944 and on 14<sup>th</sup> June 1944 was posted to 302 Ferry Training Unit at Oban in Scotland. On 15<sup>th</sup> July he departed Oban as part of a crew delivering a Catalina amphibious aircraft to 240 Squadron at Madras, India via Gibraltar and the Middle East arriving on 30<sup>th</sup> July. Dick then returned to UK by Troopship and was posted to RAF Chivenor, Devon on 29<sup>th</sup> November to join 14

Squadron flying Coastal Command Wellington Mk XIV aircraft on Anti-Submarine patrols until 7<sup>th</sup> June 1945.

As part of the celebration, Dick cut the special centenary birthday cake organised by the Branch and after the meal he was presented with a framed photograph of a Catalina aircraft similar to the one he helped deliver to India.

The Branch held its Annual Battle of Britain Service on Sunday 18<sup>th</sup> September at St Peter and St Paul's Church, Shepton Mallet followed by wreath-laying at the town's Cenotaph.

The future programme will continue as follows:.

### **Monday 3rd October: General Branch Meeting**

11:00 am for 11:15 am

At The Street Inn, 1 - 3 Somerton Road, Street, BA16 0DR.

There will be a Branch Meeting followed by a presentation and optional pub lunch.

### **Monday 7th November: General Branch Meeting**

11:00am for 11:15am

At the Street Inn, 1 - 3 Somerton Road, Street, BA16 0DR.

The Branch Meeting will be followed by a presentation "An Ordinary Wartime Airman 1942 to 1945" and then an optional pub lunch.

All events are open to Branch Members, RAFA Members from other Branches, Current and Ex-RAF Service Personnel (Including RAF Reserves), and Members of the "RAF Family".

Please contact the Branch via email [rafa.midsomerset@gmail.com](mailto:rafa.midsomerset@gmail.com) or telephone the Secretary 01458 224057 for further information.



## **Sandford & Churchill Fellowship**

Our meetings for October are as follows:

**Tuesday 4<sup>th</sup> October - Ruth Thomas**

**Tuesday 18<sup>th</sup> October - Reverend Peter Church  
at Churchill Methodist Church 2.30 pm**

Do come along for a time of worship, friendship and fellowship together  
with interesting talks.

For more information contact

**Ann Pursey on 01934 823234  
or Eileen Westlake on 01934 822433**



Wrighton Vale Inner Wheel

### **Quiz Night**

7.00 pm for 7.15 pm start

**Friday 11<sup>th</sup> November**

**The Church Centre, Winscombe  
BS25 1BA**

**Tickets £5 per person**

(Buy tickets individually or for teams of 4 people)

**Please bring your own drinks**

**Lite bites - Raffle**

Tickets available from Pru Witter on 01934 853868

In aid of Local Inner Wheel Charities



**Wrighton Vale Inner Wheel**

### **Soup and Puds Lunch**

**Wednesday 19<sup>th</sup> October 12.00 noon to 2.00 pm**

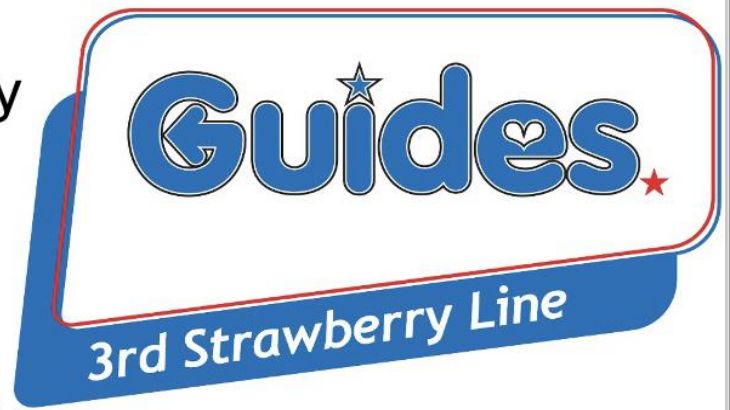
The Church Centre, Woodborough Road  
Winscombe, BS25 1BA

Tickets £7.50

Available from Pauline on 01934 853868  
In aid of Inner Wheel International Charities

# Girlguiding Strawberry Line

has opened GUIDES!!



We have had a successful first month and some exciting plans ahead.

You may have spotted some of them at Village Show in September - this was the girls 2<sup>nd</sup> day as part of the unit!

We are so proud of them for getting stuck in straight away and beginning fundraising for their activities.



Apply online for 3<sup>rd</sup> Strawberry Line Guides at

<https://www.girlguiding.org.uk/information-for-parents/register-your-daughter/>

Follow Guides, and our other units on Facebook. Search "Girlguiding Strawberry Line" and click 'like'

<https://www.facebook.com/strawberrylineguiding>



# RNLI WINSCOMBE & DISTRICT BRANCH



## AUGUST RESULTS

Although there were no specific fund raising events, the Branch continued to sell donated items on eBay and at Clevedon Sales Room that raised £204 while our local Shanty Group "High & Dry" donated £50 from one of their concerts.

## THE DEATH OF QUEEN ELIZABETH II – OUR PATRON

"On behalf of everyone involved with the RNLI, we send our heartfelt condolences to The Royal Family on the death of Her Majesty Queen Elizabeth II. Her Majesty has dedicated 70 years as patron of the RNLI, engaging with and recognising the efforts of thousands of our people. We place on record our sincere thanks for Her Majesty's unwavering commitment to saving lives at sea. Our thoughts are with The Royal Family and Her Majesty's loyal subjects across the United Kingdom and The Commonwealth." RNLI Chief Executive Mark Dowie. 8<sup>th</sup> September 2022.

As a Royal institution with royal patronage, The RNLI was duty bound to follow the official period of State Mourning out of respect. The significance of this was that the RNLI suspended all fundraising and social activities for the duration of the ten days following the death of Her Majesty, The implications and effects of this on the Branch are outlined below.

## SEPTEMBER ACTIVITIES

On Saturday 10<sup>th</sup> September, the Branch planned to support the Winscombe Village Fair with the 'Hook a Duck' game, a Souvenir Sales Stall and a small display but had to cancel its participation. Likewise, on Saturday 17<sup>th</sup>, a large number of our members planned to be at the Bristol Sea Shanty Festival armed with RNLI Collection Buckets to support the 25 shanty groups performing at six locations across the harbour area. As the Festival collection was for the RNLI, South West Prostate Cancer and Children's Hospice South West, a number of Branch Members did attend and collected as private individuals but not dressed in RNLI clothing nor carrying RNLI Buckets. The following day Sunday 18<sup>th</sup>, Branch members were unable to collect as planned at Cadbury Garden Centre. Any results will be published next month."

## THE AUTUMN PROGRAMME

The Branch will hold an "Autumn Plant & Garden Jumble Sale" from 10.00 am to 12.00 noon on **Saturday 22<sup>nd</sup> October** at the Winscombe Community Centre, Sandford Road, BS25 1JA. Stalls will include a full range of bulbs and winter plants; garden jumble including patio items and tubs; garden and domestic tools; and guest stalls. Contact Allan Cooper by email: [allan.coop@tiscali.co.uk](mailto:allan.coop@tiscali.co.uk) or tel 01934 842954 or Tina Joyce by email: [meejlfh@gmail.com](mailto:meejlfh@gmail.com) or tel 01934 842304 for more details. Branch members will collect any items donated for this sale ahead of the date. Most importantly, please turn up to support the continuing task of 'Saving Lives at Sea'.

**RNLI Winscombe Folk** returns on Saturday 12<sup>th</sup> November at 7.30 pm in the Winscombe Church Centre for a full length concert by duo **Alden & Patterson** who last appeared at RNLI Winscombe Folk as part of a trio in September 2019 when they wowed the audience.

The Branch has been granted a second opportunity to undertake a Bucket Collection at Sanders Garden Centre on Saturday 19<sup>th</sup> and Sunday 20<sup>th</sup> November.

## **AUGUST RESCUES**

In August there were twenty two shouts between our four lifeboat stations (Burnham-on-Sea 2, Minehead 10, Portishead 3 & Weston-super-Mare 7).

At 09:45 on Saturday 13<sup>th</sup> August, HM Maritime & Coastguard called RNLI Weston-super-Mare to launch to a 60 feet fishing vessel that was in need of urgent assistance North East of Steephelm Island, in the Bristol Channel. Both of Weston's inshore lifeboats were quickly launched from Knightstone Harbour with a salvage pump along with 7 crew on board to assist. The Barry Dock All-Weather Trent class lifeboat and Coastguard Rescue Helicopter 187 from St. Athan were also dispatched to assist the casualty vessel.

The Weston Atlantic 85 lifeboat, with Helmsman Dave Ridout on his first shout since qualification as helm on this type of lifeboat, was the first asset to arrive at the casualty's location and came alongside the fishing vessel, then quickly and safely transferred two casualties off the stricken vessel.

A salvage pump was quickly set up by the volunteers, but it soon became apparent that the vessel was taking on too much water and couldn't be saved. The casualties were transferred onto the Barry Dock lifeboat and assessed in case medical care was required; they were assessed to be in good spirits and not needing any treatment.



Just a few minutes after the lifeboats and helicopter arrived on scene, the fishing vessel was lost to the sea as it disappeared below the surface. Once the gravity and speed of the event was realised by the survivors and lifeboat crew, the decision was made to return back to the Weston Lifeboat Station at Knightstone where the two casualties were brought safely ashore to arrange for them to get home.

A very sad outcome for the fishing vessel, but, thankfully, RNLI Weston were on scene quickly to bring the two casualties back to the safety of the

shore and their families. The Weston crew reported that the two survivors are very experienced seafarers who were well prepared with their safety equipment and procedures for calling for help and evacuating which aided their quick rescue and recovery.

The Friends of St James' Church, Winscombe

# **JESSIE the HAWK**

*An Introduction to Falconry*

**Tuesday 15<sup>th</sup> November at 7.30 pm**

**The Church Centre**

(Subject to Approval)

Adrian Cobb grew up on Exmoor with a keen interest wild life and natural history. Adrian will be bringing his hawk Jessie with him and his talk will cover every aspect of falconry, birds, equipment, husbandry and his own journey of discovery.

Tickets from Janet White at the Hampden Clinic, Woodborough Road or any member of the committee.



**Winscombe Saturday  
Market**

**Winscombe Community  
Centre**

**Every 3rd Saturday  
of the month**

**0900-1300**

## Remembering Queen Elizabeth with Winscombe Primary School

It was great to have Winscombe Primary School Year 6 pupils with us, at our Coffee Morning, on Tuesday 13<sup>th</sup> September, along with the local police, our regulars from the local community and friends from Leonard Cheshire.

This was a very special occasion to give thanks for and commemorate the life of Her Majesty Queen Elizabeth II, for her long reign and her faithful service to God, this country and Commonwealth.

We especially enjoyed having Y6 share their own memories of our dear Queen, along with singing the National Anthem. They all helped make it such a wonderful community occasion for all-ages.



# COFFEE MORNING



Every Tuesday throughout October at 10.30 am  
Church Centre, Winscombe  
All Welcome

## **The Church of England Benefice of Winscombe and Sandford with Churchill Churches' Administrator**

### **Role**

We are looking for a gifted, experienced and skilled administrator to come and join our Benefice on a flexible, self-employed, part-time basis to support our ministry. The purpose of the role is to supervise and facilitate the day to day administrative operations of the Benefice, in close co-operation with the Vicar and Churchwardens. As a Benefice, our beliefs are foundational to everything we do.

This position requires a significant degree of professionalism and the ability to work in an ever changing environment, where multi-tasking, sound decision making, self-motivation, discretion and confidentiality are essential. The postholder will need confidence and be able to demonstrate organisational, communication and interpersonal skills.

### **Location and Hour**

This post will be based in the Church Office located in the Church Centre, 52 Woodborough Road, Winscombe, BS25 1BA. The role is envisaged for 9 hours a week with flexibility possible in the distribution of these hours. However, some core time will be required on Mondays, Wednesdays and Fridays. Also, some additional hours may be required for the postholder to attend occasional evening or weekend meetings.

### **Terms and Conditions**

The detailed terms and conditions will be contained in the postholder's Letter of Appointment. The position is dependent on two suitable references and acceptable pre-appointment checks, including an enhanced DBS check. The Benefice is committed to safeguarding and promoting the welfare of children, young people and vulnerable adults. All postholders and volunteers are expected to share this commitment.

The pay will be £9.90 per hour and payment will be made on receipt of a monthly timesheet and invoice. The remuneration and working agreement will be reviewed on a regular basis.

Leave should be arranged in advance with the Vicar and Administration Manager, bearing in mind the particular demands of preparation for major church occasions. The Administration Manager will review regularly with the postholder duties and responsibilities and discuss development, common concerns and opportunities for training. Any additional hours will be agreed in advance with the Vicar or Administration Manager, and will be paid at the hourly rate.

## Key Responsibilities

Under the direction of the Administration Manager

- Run an efficient and effective office operation based at the Church Centre.
- Perform administrative tasks as requested by the Vicar and Churchwardens.
- Provide administrative support to the PCCs Secretaries, Treasurers, Gift Aid Officers and Safeguarding Officers.
- In conjunction with the Vicar and Priest in Charge, funeral directors, wedding couples and baptism families, provide administrative support in relation to Occasional Offices for Baptisms, Weddings and Funerals.
- Maintain an online booking system for the scheduling and oversight of external hirers, and church based organisations using the Church Centre.
- Maintain an online booking system for the use of the Churches and Church Rooms for services, meetings and special events.

A detailed Benefice Administration Key Responsibilities document is available from Douglas Ogram, Churchwarden, All Saints Church, Sandford. He can also be contacted for more details about the position, and to answer any questions you may have.

01934 820972

07967 362027

[douglas@ogram.com](mailto:douglas@ogram.com)

## Timeline

<b>Closing Date for Applications</b>	31 <sup>st</sup> October 2022
<b>Interview</b>	14 <sup>th</sup> November 2022
<b>Start in Post</b>	1 <sup>st</sup> December 2022

**Please apply to**

**Reverend Andrew Hiscox**  
**The Vicarage**  
**11 Holstein Avenue**  
**Winscombe**  
**North Somerset**  
**BS25 1EJ**

07970 011502

[rev.andrew.hiscox@hotmail.com](mailto:rev.andrew.hiscox@hotmail.com)



## All Saints and All Souls

This year we will be marking All Saints Patronal Festival and All Souls on Sunday 30<sup>th</sup> October. All Saints Patronal Festival Service takes place at 11.00 am and our All Souls Act of Remembrance at St James's at 3.00 pm.

### **ALL SOULS: SUNDAY 30<sup>th</sup> OCTOBER 3.00 pm at ST JAMES'S CHURCH**

A time around All Souls' Day which offers people an opportunity to remember those they have loved but see no longer, whether the loss is recent or long ago, and to support and maintain contact with bereaved families. We hope to share a message of comfort and hope to everyone.

#### **We Remember Them**

At the rising of the sun and its going down,  
we remember them.

At the blowing of the wind and in the chill of winter,  
we remember them.

At the opening of the buds and in the rebirth of spring,  
we remember them.

At the blueness of the skies and in the warmth of summer,  
we remember them.

At the rustling of the leaves and in the beauty of autumn,  
we remember them.

At the beginning of the year and when it ends,  
we remember them.

As long as we live, they too will live;  
for they are now a part of us, as we remember them.

When we are weary and in need of strength,  
we remember them.

When we are lost and sick at heart,  
we remember them.

When we have joy we crave to share,  
we remember them.

When we have decisions that are difficult to make,  
we remember them.

When we have achievements that are based on theirs,  
we remember them.

As long as we live, they, too, will live;  
for they are now a part of us, as we remember them.





## **Her Majesty the Queen 21<sup>st</sup> April 1926 to 8<sup>th</sup> September 2022**

Our villages joined with the nation and Commonwealth in mourning the loss of Queen Elizabeth. Books of condolence were opened, flowers laid and the church bells rung.

Queen Elizabeth's Christian faith was central to her life. The following quotes are taken from *'The Servant Queen and the King She Serves'* published by the Bible Society to mark Her Majesty's 90<sup>th</sup> Birthday.

### **Putting her service in the hands of God**

'I declare before you all that my whole life whether it be long or short shall be devoted to your service and the service of our great imperial family to which we all belong. But I shall not have strength to carry out this resolution alone unless you join it with me, as I now invite you to do: I know that your support will be unfailingly given. God help me to make good my vow, and God bless all of you who are willing to share it.' (21st birthday radio address, 1947)

### **The only way to live her life**

'I know just how much I rely on my faith to guide me through the good times and the bad. Each day is a new beginning. I know that the only way to live my life is to try to do what is right, to take the long view, to give of my best in all that the day brings, and to put my trust in God!' (2002)

### **Why Jesus is unique**

'Although we are capable of great acts of kindness, history teaches us that we sometimes need saving from ourselves – from our recklessness or our greed. God sent into the world a unique person – neither a philosopher nor a general (important though they are) – but a Saviour, with the power to forgive.' (2011)

### **What sustains her in difficult times**

'To many of us our beliefs are of fundamental importance. For me the teachings of Christ and my own personal accountability before God provide a framework in which I try to lead my life. I, like so many of you, have drawn great comfort in difficult times from Christ's words and example.' (2000)

### **How Christ is the inspiration in her life**

'For me, the life of Jesus Christ, the Prince of Peace, is an inspiration and an anchor in my life. A role-model of reconciliation and forgiveness, he stretched out his hands in love, acceptance and healing. Christ's example has taught me to seek to respect and value all people of whatever faith or none.' (2014)

### **God's gift of reconciliation**

'The gift I would most value next year is that reconciliation should be found wherever it is needed. A reconciliation which would bring peace and security to families and neighbours at present suffering and torn apart. Remember that good spreads outwards and every little does help. Mighty things from small beginnings grow as indeed they grew from the small child of Bethlehem.' (1976)

### **Jesus gives us strength to follow him**

'Christ not only revealed to us the truth in his teachings. He lived by what he believed and gave us the strength to try to do the same - and, finally, on the cross, he showed the supreme example of physical and moral courage.' (1981)

### **How God restored love to our lives through Jesus**

God sent his only son 'to serve, not to be served'. He restored love and service to the centre of our lives in the person of Jesus Christ.' (2012)

### **The challenge of Christian discipleship**

'In difficult times we may be tempted to find excuses for self-indulgence and to wash our hands of responsibility ..... we need to go out and look for opportunities to help those less fortunate than ourselves, even if that service demands sacrifice.' (1980)

**Why no one is beyond God's love** 'For Christians, as for all people of faith, reflection, meditation and prayer help us to renew ourselves in God's love, as we strive daily to become better people. This love is for everyone. There is no one beyond its reach' (2013)

## The same yesterday, today and forever



Many of us know well Bob Dylan's song 'The Times They Are A-Changin'. Was it written with us in mind? None of us could have predicted the changes that we have seen in 2022. The death of our beloved Queen Elizabeth, the accession of a new King, a war in Ukraine, a cost-of-living crisis. None of these were on the cards as we made our new year's resolutions on the 1st of January.

Yet happen they have. And whether we like it or not, we're forced to agree with Bob Dylan's lyrics that the times are indeed changing. What can we see us through these days?

A phrase that's often used about the period through which we're going is 'unprecedented'. I'm not sure it's entirely valid! Previous generations have faced situations as challenging or more than ours – seasons of plagues, wars, famines and conquest. The times in which the New Testament was written were, for its writers, periods of profound uncertainty. Its writers faced violence and vulnerability, conflict and dispute. Yet into their times they were able to speak words of hope, confidence and assurance.

One such phrase that stands out for me is a line from the letter to the Hebrews. Hebrews was written in response to a time of persecution and the possibility of people falling back from the faith as a result. Into its time and ours, the writer of the letter makes an extraordinary claim: 'Jesus Christ is the same yesterday, today and forever.' (Hebrews 13:8)

Just imagine! The one who walked in Galilee has been there for his people throughout time, is with us now, and will be whatever the future may hold.

So respectfully, I have to disagree with Bob Dylan. In his song he tells us that in the face of times that are 'a-changin', we'd better start 'swimmin'. Much better than hyperactive splashing, I suggest, is to live out our vision to 'live and tell the story of Jesus'. For it's as we do so that we can hold fast to the one who is constant and unchanging, who holds us always in the palm of his hands; Jesus Christ who is 'the same yesterday, today and forever.'

Bishop Michael

## Useful Telephone Numbers

<b>Police</b>	Non- Emergency PCSO Kayley Anderson	Call 101 07802 874658
<b>Fire</b>	Non-Emergency	01179 262061
<b>Police, Fire, Ambulance</b>		Call 999
<b>Utilities - Emergency</b>	Gas - National Grid Gas Electricity - Western Power Distribution Water - Bristol Water Water - Wessex Water (24 hour)	0800 111 999 Call 105 03457 023797 02456 004600
<b>Health</b>	NHS Health Enquiries Winscombe Surgery Banwell Surgery Mendip Vale, Langford	Call 111 01934 842211 01934 820113 01934 852906
<b>Hospitals</b>	Weston General Hospital Bristol Royal Infirmary Bristol Southmead Bristol Children's Hospital	01934 636363 01179 230000 01179 505050 01179 665881
<b>Pharmacy</b>	Boots, Winscombe	01934 843168
<b>Dentists</b>	Honeycomb Dental Clinic Winscombe Dental Practice	01934 842573 01934 842230
<b>Veterinary</b>	Alexandra and Hillyfields Vets Langford Vets Small Animal Practice	01934 843381 01934 852422
<b>North Somerset Council</b>	Information Out of Hours Emergency Environmental Problems Council Tax and Benefits Social Services	01934 888888 01934 622669 01934 888802 01934 888144 01275 888801
<b>Parish Councils</b>	Winscombe and Sandford Churchill and Langford	01934 844257 07399 523961
<b>Assistance</b>	Winscombe Contact Scheme Sandford Helpline Churchill Churches Volunteer Driver Scheme Samaritans (North Somerset) Citizens Advice Bureau Churchill and Langford Minibus	07888 812398 01934 822030 01934 852239 0330 094 5717 0808 278 7973 01934 852589
<b>Schools</b>	Winscombe Primary School Sandford Primary School Churchill Academy and Sixth Form Sidcot School	01934 843407 01934 852602 01934 852771 01934 843102

***We hope you have enjoyed reading Signpost.***

***Don't forget to send us your email address to receive next month's Signpost and future editions.***